



PDA——全球领先建筑材料供应商

其旗下各产品及品牌，主要关注节能、安全和人性的行业发展趋势

CONTACT US

www.china-medal.com



隔断 门系统

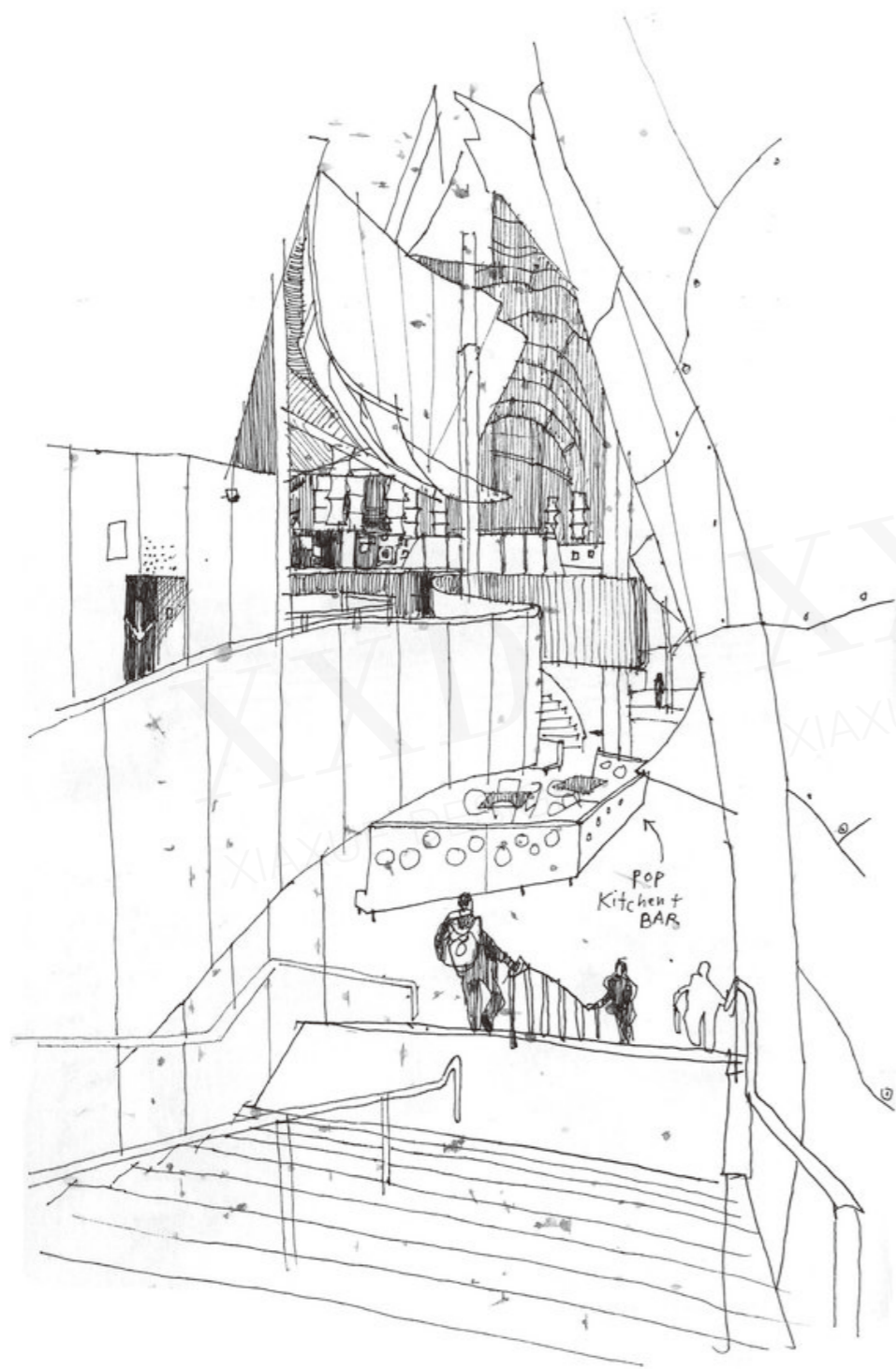
THE WORLD'S LEADING SUPPLIER OF THE BUILDING MATERIALS

ALL PRODUCTS AND BRANDS MAINLY FOCUS ON THE DEVELOPMENT OF ENERGY SAVING, SAFETY, AND HUMANE INDUSTRY.

美得集团总部: +86 400 0365332

天津公司: +86 022 87310452
北京公司: +86 010 87723967
上海公司: +86 021 61526106
深圳公司: +86 0755 82555622

Tel -Tianjin: +86 022 87310452
Tel -Beijing: +86 010 87723967
Tel -Shanghai: +86 021 61526106
Tel -Shenzhen: +86 0755 82555622



DIRECTORY

01

装饰性隔断
Ornamental Partition

02

门系统
Door System

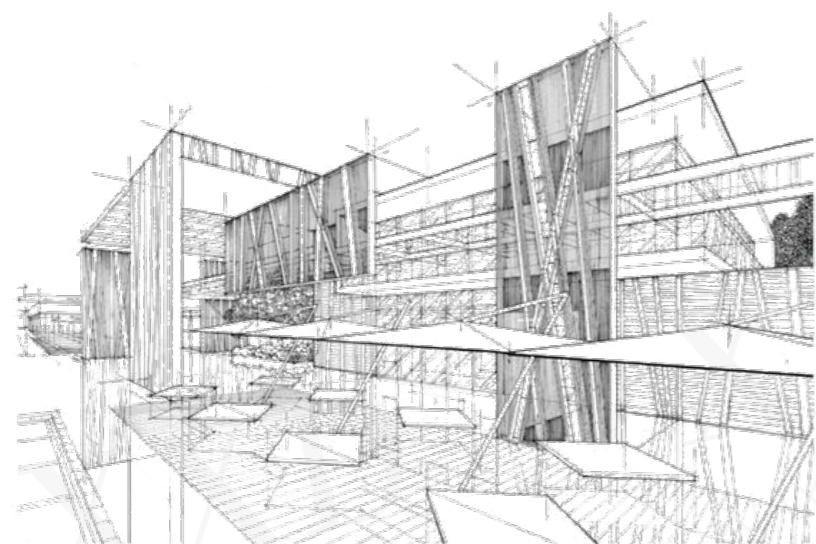
03

钢质隔墙
Steel Partition Wall

04

墙柜
Wall Cabinet

XXD
XIAXUE DESIGN



XIAXUE DESIGN

装饰性隔断

Ornamental Partition



冰晶系列

产品类别：冰晶系列
防火等级：非防火
应用场所：高端写字楼办公区、学校等
项目案例：联想(北京)总部、迈科中西部、中信集团办公楼、香港正立办公楼、美国普洛斯律师事务所、美国海纳维圣、ICON国际教育集团办公楼、红帽软件

Product category: Crystal series
Non fire-resistant
Application: office area, school and so on
Project cases: Lenovo (Beijing) headquarter, Xi'an Midwest Trading Center, CITIC Group office, HONG-KONG CHANSTAND office building, ProLogis LLP, international education group of ICON, Red hat software, etc.

ADVANTAGE NON-FRAME DESIGN,

up to 3000 mm high,

eccentricity axle cantilever type hinge,

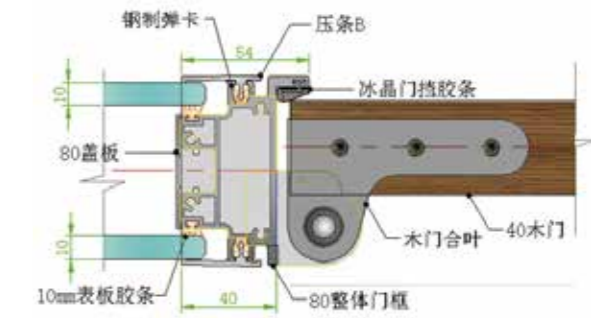
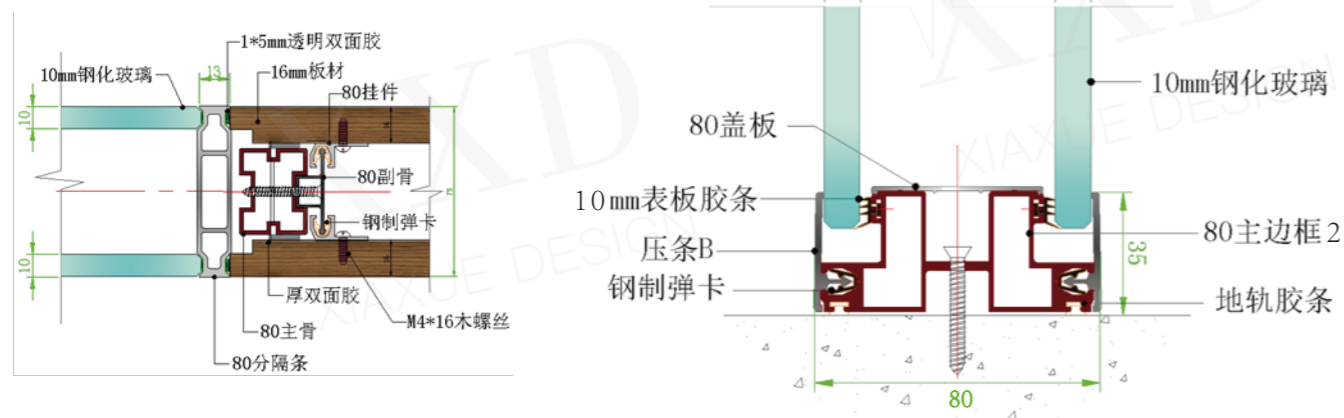
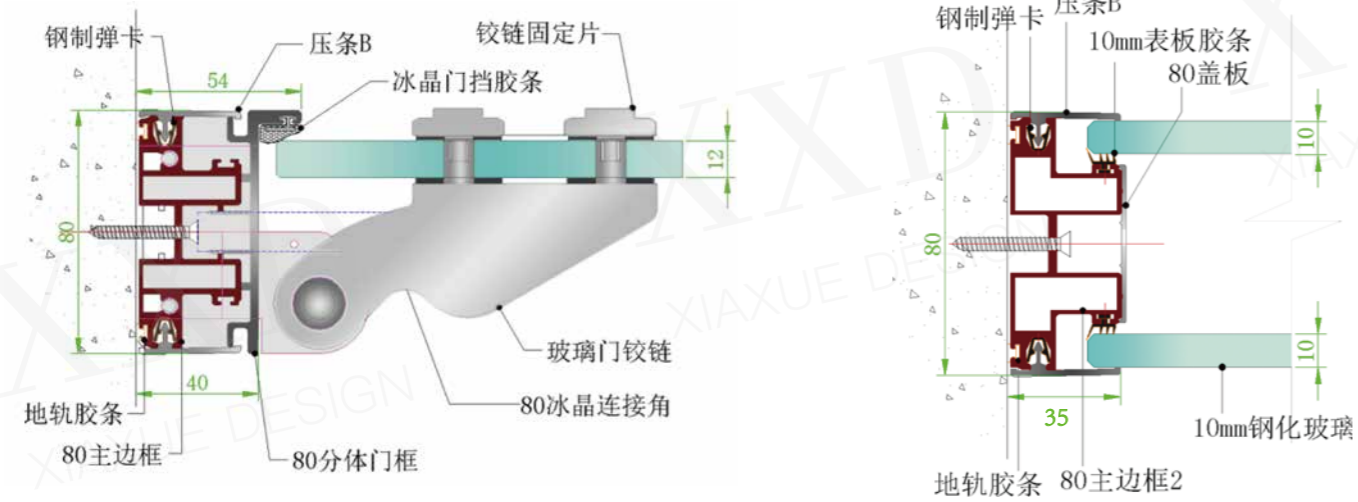
with exclusive patent technology, and the hinge can be adjusted later.

玻璃与玻璃拼接的无框处理，最高可达3000mm高。
五金采用偏心轴悬臂式合页，拥有独家专利技术，合页可左右调节。



设计源自意大利，整体风格简约、通透，设计感强烈
Designed by Italian, the overall style is warm, transparent and creative.

CRYSTAL SERIES NODE



门系统使用平口门框，五金搭配上
偏心轴悬臂式合页

Flat door system, equipped with eccentric
axle cantilever type hinge.



玻璃可做单层玻璃、双层玻璃，可内置手动/电动百叶调光机构。单玻可做弧形，玻璃可以做电控调光玻璃。墙体厚度50 / 80 / 108mm。

The glass can be made in single-glazing and double-glazing, can be settled with manual or electric shutter. can be electrically controlled dimming glass. The thickness of the wall contains 50mm, 80mm and 108mm.

CRYSTAL SERIES

Crystal series: Viewing the exterior, the Crystal is a classic design of the brief Nordic Style, it does help to build up a transparent and opening office space, with broaden viewpoint and slender profile lines, it perfectly describes the concept of quiet and the opening. With glass, profiles, decorating blocks and hardware, we achieve the fluent connection and succeed in separating the office into different function districts.

在外观上，冰晶系统是现代简欧风格的代表，力图在视觉上打造出通透而开放的办公空间，用尽量少的线条、宽阔的视野以及纤细的型材，传达出设计师所向往的静谧和灵动。该系列将玻璃、型材、饰面板、五金等整合，且无突兀过渡，通过材质的区别、分区的区别、功能的区别，实现室内设计的多样化、个性化。



无框风格，玻璃与玻璃之间采用进口3M胶与7mm透明聚碳酸酯条连接，摒弃了传统的金属立柱。

Designed by Italian designers, non-frame style, glass panels are connected by 3M tapes or 7mm transparent polycarbonate connection straps rather than traditional metal column.



CRYSTAL SERIES

XD
ICE DESIGN

产品类别： 水影系列
 防火等级： 非防火
 应用场所： 高档写字楼办公区、学校、医院、工厂等
 项目案例： 山东如意集团、迈科中西部商品交易中心等

产品优势：
 1. 精密的自动沉降系统配合门体自身108mm的厚度，能够满足现代办公对隔音性能的最高要求。

Product category: Water series
 Non fire-resistant
 Application: factory,hotel,hospital,school,office area,etc.
 Project cases: Ruyi Group in Shandong Province,Mid-west Commodity Exchange Center,etc.

Product advantages:
 1.The door is equipped with automatic settlement system at the bottom. Accompanying with the door's own depth 108mm,it can perfectly meet different sound insulation functions in modern society.





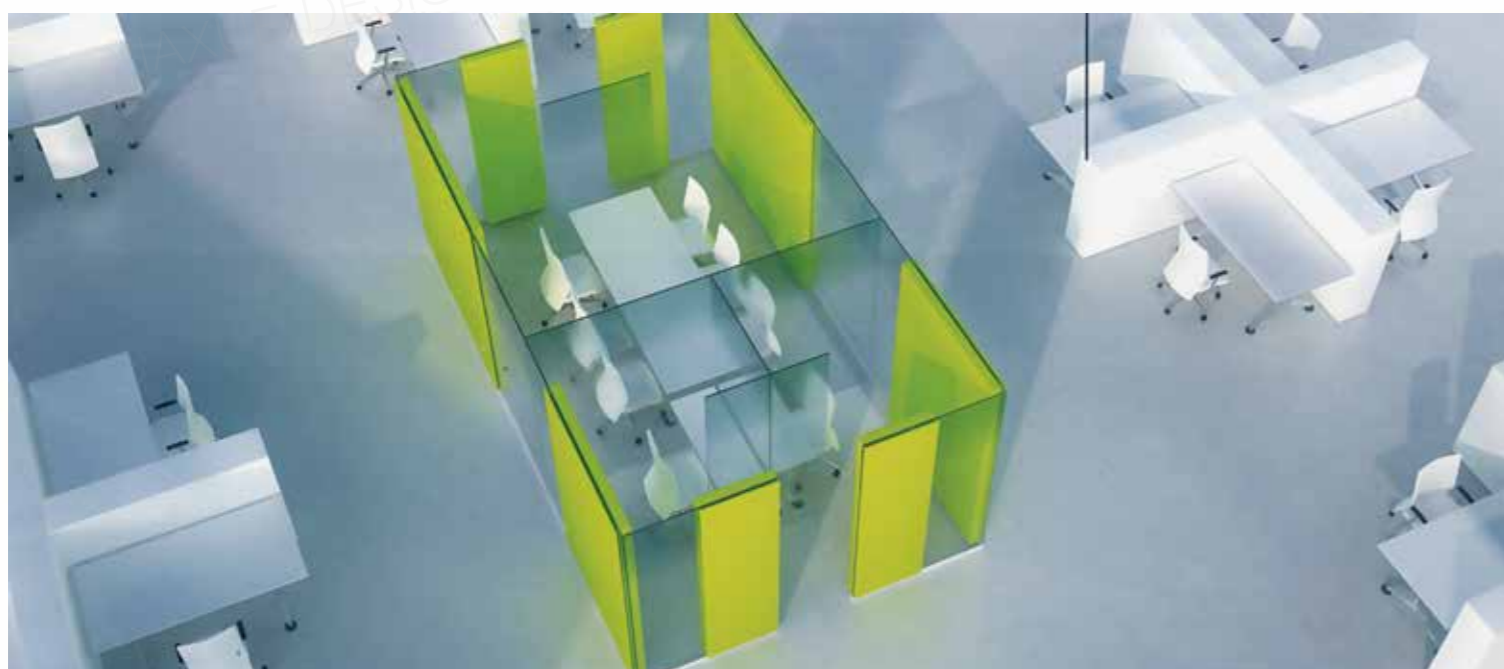
2. 水影门搭配水影隔断，可以使两者的衔接面保持在同一水平面，打造出更具整体美感的办公环境。

2.This system can be produced as doors and partitions. Through the cooperation,they can stay at the same vertical surface and help to build up a comfortable office environment with overall aesthetic.



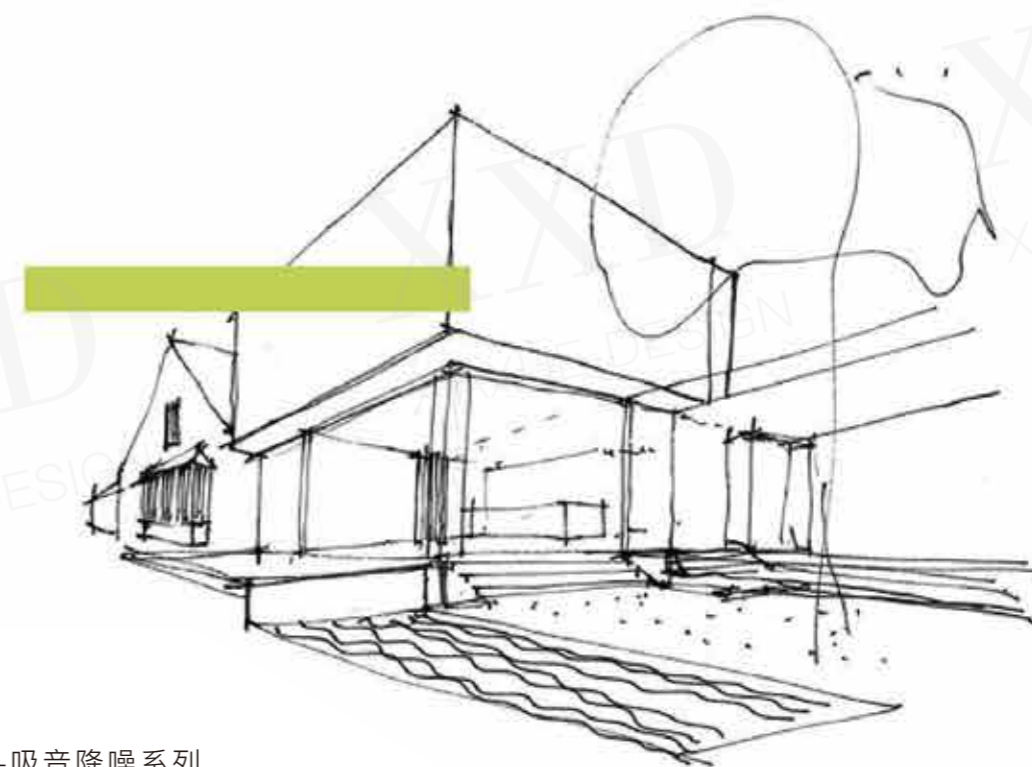
水影最大的特点在型材特制的凹槽粘贴玻璃形成了隔断完美的水平面，呈现出一种静谧高雅的和谐。

By Pasting the glass inside the groove of the profiles,we can get a perfect vertical surface,which achieve a balance between elegance and quietness.



PDA-吸音降噪系列

PDA -SERIES NOISE REDUCTION



产品类别：PDA-吸音降噪系列
 防火等级：非防火
 应用场所：办公区、休息室、医院、学校、呼叫中心
 项目：联想总部

产品特点：
 PDA率先提出声学建筑概念，对健康提出新的定义，将吸声降噪模块引入国内，旨在对建筑环境进行新的规划，降低室内噪音，减轻生活、工作压力，提高工作及沟通效率，给我们一个更安静的环境。

Product category:
 PDA sound absorption and noise reduction series
 Non fire-resistant
 Application: office area, lounge, hospital, school, call center
 Project cases: Lenovo headquarter

Product features:
 PDA first proposed the concept of acoustics architecture, give a new definition of the health. The sound absorption modules have a good performance in absorbing the noise and help to make a peaceful working environment, improve the working efficiency.

XXD
XIAXUE DESIGN



门系统

Door System

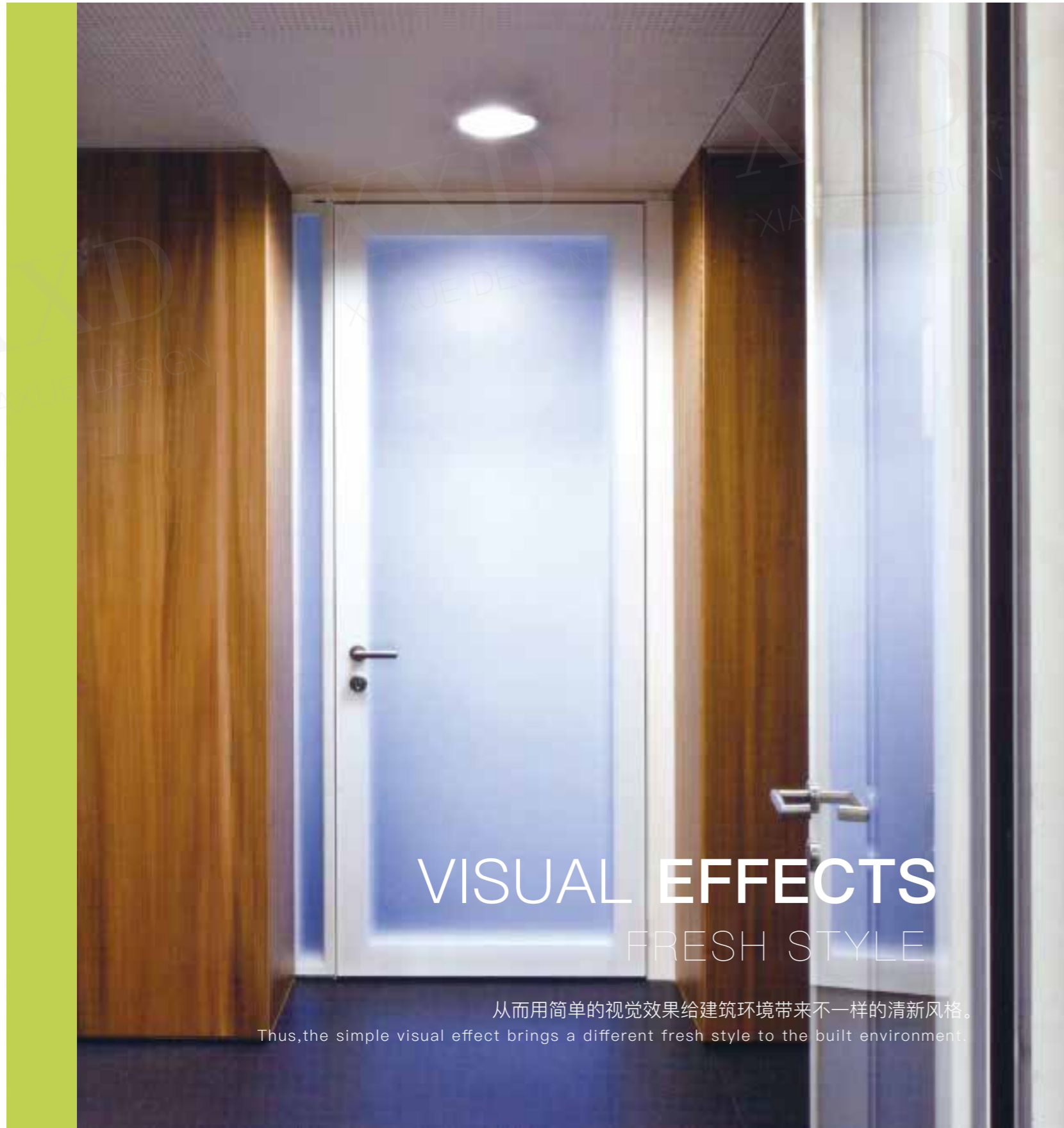
隐框门系列

HIDDEN FRAME DOOR



水影隔音门与隔断在水平面上保持一致，整体感强，具有出色的隔音功能。

The matching door of the water shadow can be made flush with the partition,so that the entire wall looks more complete,With a good performance in sound insulation.



VISUAL EFFECTS
FRESH STYLE

从而用简单的视觉效果给建筑环境带来不一样的清新风格。
Thus, the simple visual effect brings a different fresh style to the built environment.



ACCESSORIES

合页：

我们采用卡合式合页固定在门框上，固定螺丝不与门框直接接触不损坏门框，重复利用率100%，符合美标与欧标的环保要求。

Hinge:

We use a snap-fit hinge to fix the door frame. The fixing screw does not directly contact the door frame and does not damage the door frame. The repetition rate is 100% and it meets the environmental protection requirements of American Standard and European Standard.

N O R - E U R O H I D D E N F R A M E D O O R



NOR-EURO隐框门
在建筑设计中，一坐不变的木门样式及功能已经持续了几十年。
直到，NOR-EURO隐框门的到来。



Nor-Euro Hidden Door
The style and function of the wooden door hasn't changed for many years until the coming of the
Nor-Euro Frame-hidden door.

诺优隐框门-北欧风
NOR-EURO HIDDEN DOOR

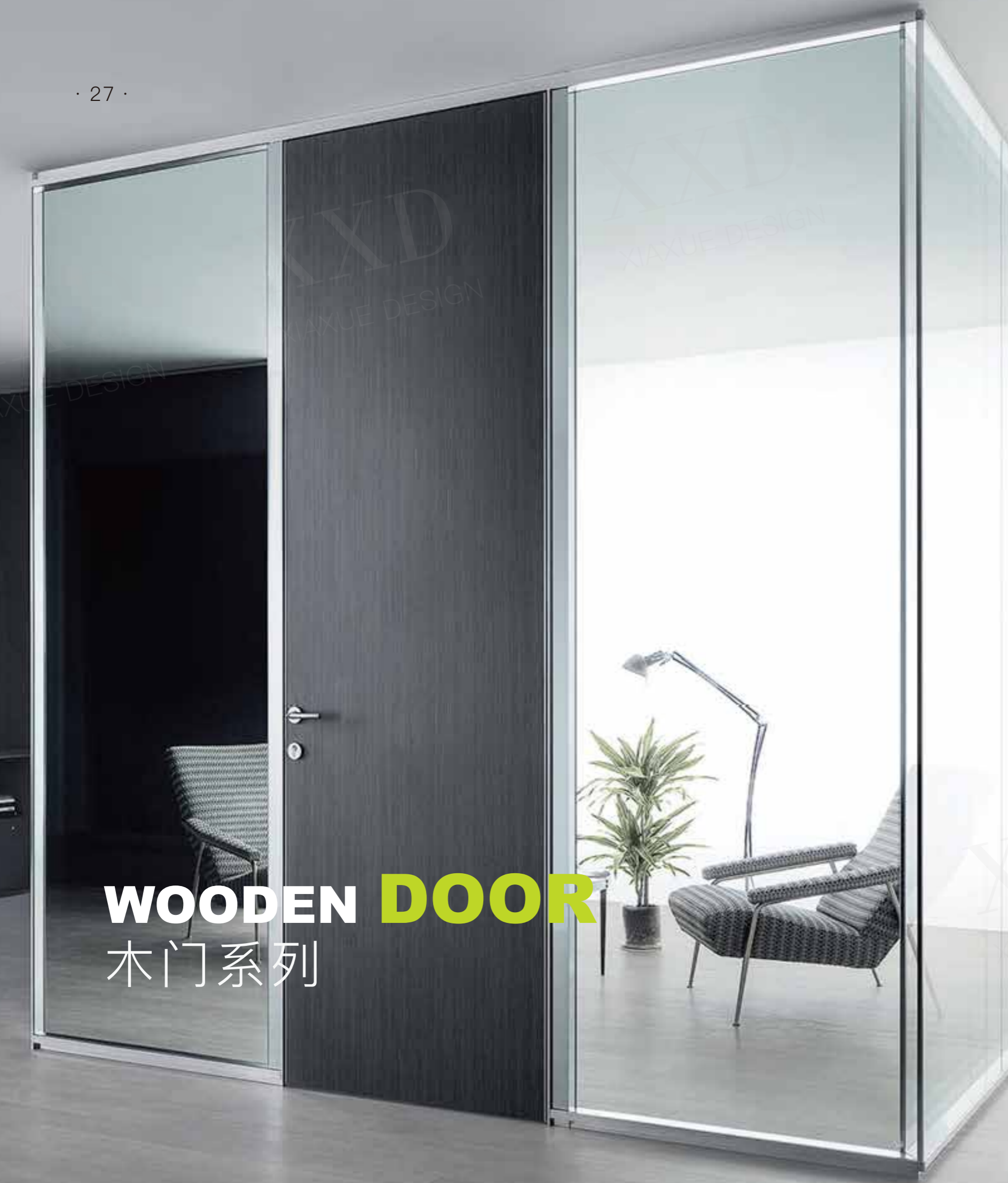


■ NOR-EURO隐框门

NOR-EURO隐框门采用与以往完全不同的结构设计，将门、门框、边板、头板、还有玻璃等材质融为一体，隐去多余的材质和烦杂的颜色，并将参差的平面回归统一。

The Nor-Euro adopts new structure designs which makes the door, frame, glass and other details into a whole one. Without disturbing from different materials and colors, the doors and walls are kept on the same vertical horizon. Thus offering us a natural and fresh feeling.





WOODEN DOOR
木门系列



木门系列：拥有自然纹路的木门一直是设计师在材料选择上的青睐。木门、型材和玻璃的结合更加丰富了空间的元素。

Wooden door: with the natural lines, wooden doors is always the preference of the architects and designers. The combination of wood, steel and glass enrich the office elements.

WOODEN DOOR SERIES

ALUMINUM

FRAME DOOR SERIES

铝框门系列

13 H1 会议室 Meeting Room



铝框门系列：

单玻/双玻铝框门兼顾玻璃的通透和型材的质感，比起常规的玻璃门可以实现更大尺寸（1200*3000单扇），门体厚度40/45mm，并且可以配合明装及隐藏式闭门器、电子锁等五金产品。

ALUMINUM FRAME DOOR:

This kind of product considers both the transparency of the glass and the quality of the profiles, compared with the normal glass doors, ours size can be much bigger (single leaf, 1200mm*3000mm). And can be equipped with door closer, electronic doors and other hardware.



**DOUBLE GLASS
ALUMINUM
FRAME DOOR**
双玻铝框门

NON-FRAME GLASS DOOR



Non-Frame glass door: can be build up in different methods,can be set up on nearly all the decoration partitions. Find a balance between practical and functional.

无框门系列:无框玻璃门可实现平开、推拉,并且可以应用于所有装饰性隔断上,兼具经济型与实用性。



HUGE STEEL FRAME DOORS

超大钢框门

XXD
XIAXUE DESIGN

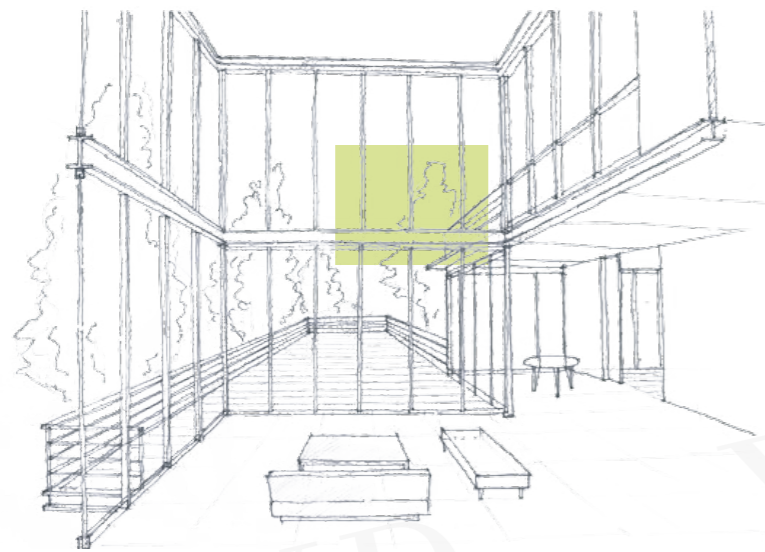
HUGE STEEL FRAME DOORS

超大钢框门



超大钢框门：材质的超高强度可以实现超高门和超大门，运用偏心轴开启，可以使其达到4500MM的高度。

Huge steel frame doors: with outstanding strength, the steel materials can be made into higher and bigger doors than normal ones, in accordance with the upper and lower axis, the height of the door can reach 4500mm.



钢制隔断

Steel Partition



DESIGN 50系统

外形简约、纤细坚固、极高的性价比，适合室内外防火及非防火要求的门和隔断，可实现C类防火，同时具备较高的环保性。

Design 50 system, simple shape, slim and sturdy, high cost performance, suitable for indoor and outdoor doors and partitions without thermal insulation requirements. Can achieve C fire protection, good performance in environment protection.



50系统参数:

- 1. 钢质框架, 框架型材深度为50mm
- 2. 钢材为欧洲进口1.5mm厚优质冷弯钢型材
- 3. 门扇型材的看面尺寸为90/70mm
- 4. 门扇底部型材的看面尺寸为90mm
- 5. 最大门扇尺寸和重量:
 - 平开门: 1500 (W) X 3000 (H) mm, 180KG
 - 地弹门: 1500 (W) X 3000 (H) mm, 200KG
- 6. 玻璃表板厚度: 10~28mm



SYSTEM PARAMETERS:

- 1. Steel frame, frame profile depth is 50mm
- 2. Steel for European imported 1.5mm thick high quality cold-formed steel profiles
- 3. The face size of the door leaf profile is 90/70mm
- 4. The size of the bottom profile of the door leaf is 90mm.
- 5. The maximum door size and weight:
 - Swing door: 1500 (W) X 3000 (H) mm, 180KG
 - Ground bullet door: 1500 (W) X 3000 (H) mm, 200KG
- 6. Glass table thickness: 10~28mm



SIMPLE SLIM COST-EFFECTIVE
STEEL PARTITION

80钢制双玻系列

80 steel double glass series

产品类别：80钢制双玻系列

防火等级：C类111min

应用场所：高档办公区地下、商场、医院、学校、公用建筑办公区、工厂等

表面处理：锌镁合金镀层防腐防锈处理

项目案例：联想二期、上海雅培、唐山瑞丰钢厂

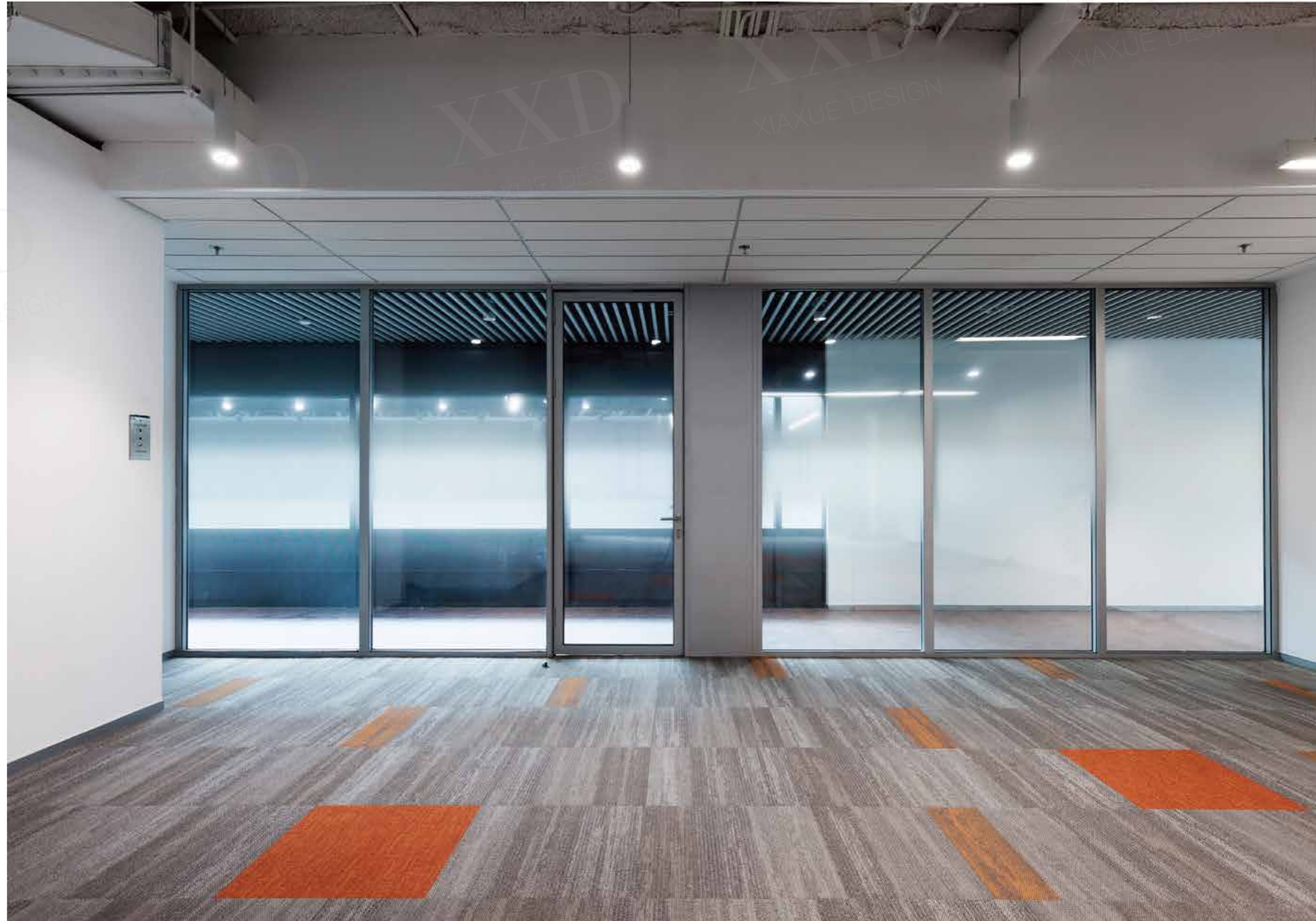
Product category: 80 steel double glass series

Fire rating: Class C 111min

Application places: Lenovo, underground, shopping malls, public buildings, office areas, high-end office areas

Surface treatment: anti-corrosion and anti-rust treatment of sinter-magnesium alloy coating

Project case: Shanghai Abbott, Tangshan Ruifeng Steel Factory



80 STEEL DOUBLE GLASS SERIES

80 STEEL DOUBLE GLASS SERIES



双玻系列打破了传统的单层防火玻璃隔断风格，采用双层设计，不仅丰富了办公空间的设计选择，而且通过内置百叶的设计满足了客户在办公私密性上的更高要求。

Break the tradition of the single fireproof glass design, the double-glazing fireproof glass partition not only enrich the office design style, but also meet customers higher privacy requirement by the inside shutters.

XXD
XIAXUE DESIGN

FEATURES



特点:

- 强度高: 多弯钢型材强度比常规高一倍
- 隔音好: 双玻能更好的隔音, 并可内置百叶
- 防火性: 防火完整性E120
- 灵活性: 可与hermetic55门窗系统组合
- 密封好: 自动门密封系统让烟雾无处遁形
- 专业性: 自主设计研发奥地利生产

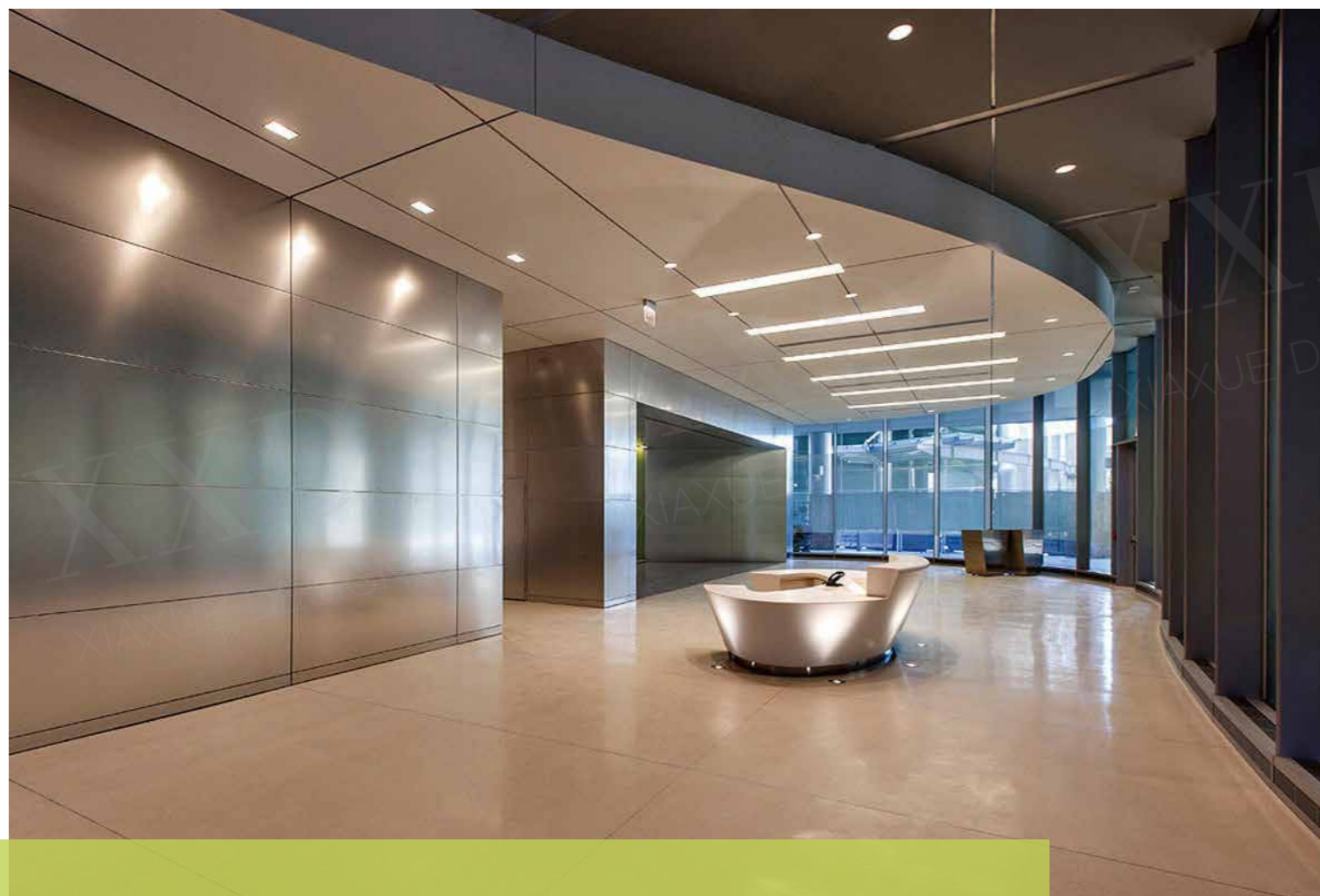
80 STEEL DOUBLE GLASS SERIES



Features:

- High strength: multi-bend steel profile is twice as strong as conventional
- Good sound insulation: double glass can better sound insulation, and can be built in louvers
- Fire resistance: fire integrity E120
- Flexibility: can be combined with hermetic55 door and window system
- Sealed: automatic door sealing system makes the smoke nowhere
- Professionalism: Independent design and development of Austrian production

医疗钢板饰面隔墙 MEDICAL DECORATION STEEL PARTITION



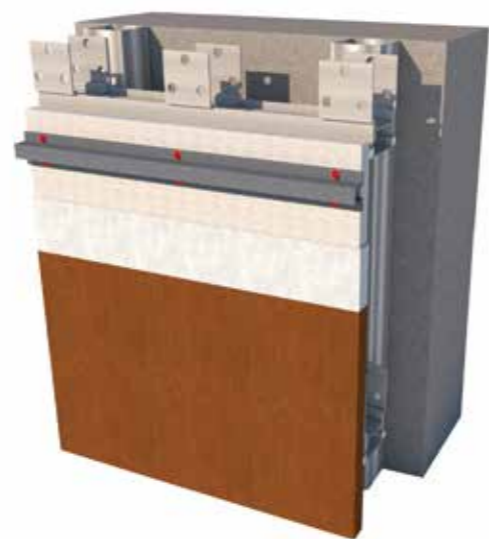
医疗钢板饰面隔墙：钢板饰面隔墙是采用热压覆膜钢板，经过裁切、开角、刨槽、冲压、折弯，再内附防火基材而成的干挂饰面材料。其除了可实现挂槽板、双面钢板隔断以外，还可以做包柱、收口、钢制门扇及门套、消防箱门等。

Medical decoration steel partition: through many different kinds of dealings, after giving the steel hot pressing films, we get the decoration steel blocks. It can not only be made into partitions and different door sets, but also be used as covering, healing and so on.



MEDICAL DECORATION STEEL PARTITION



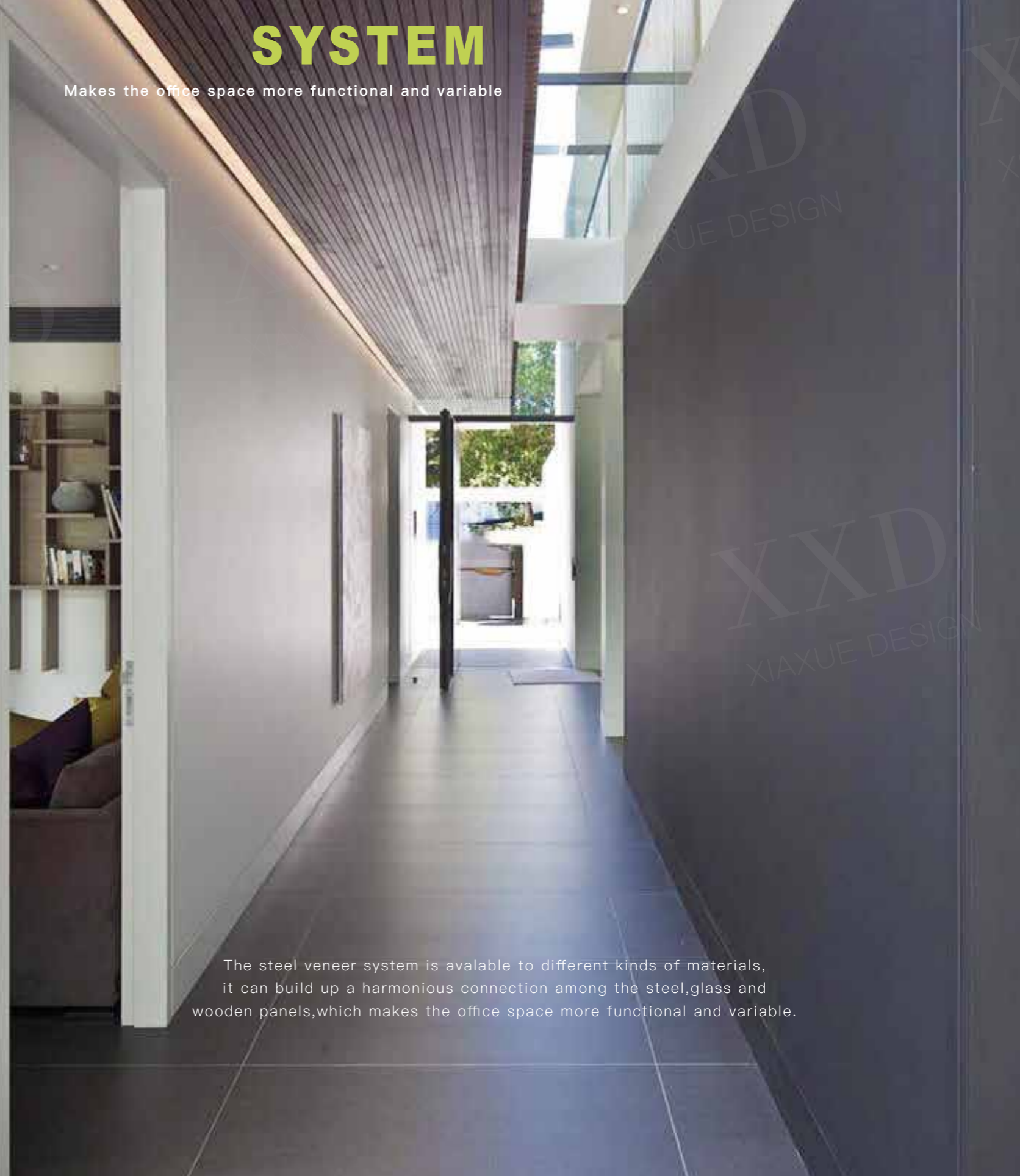


挂板节点

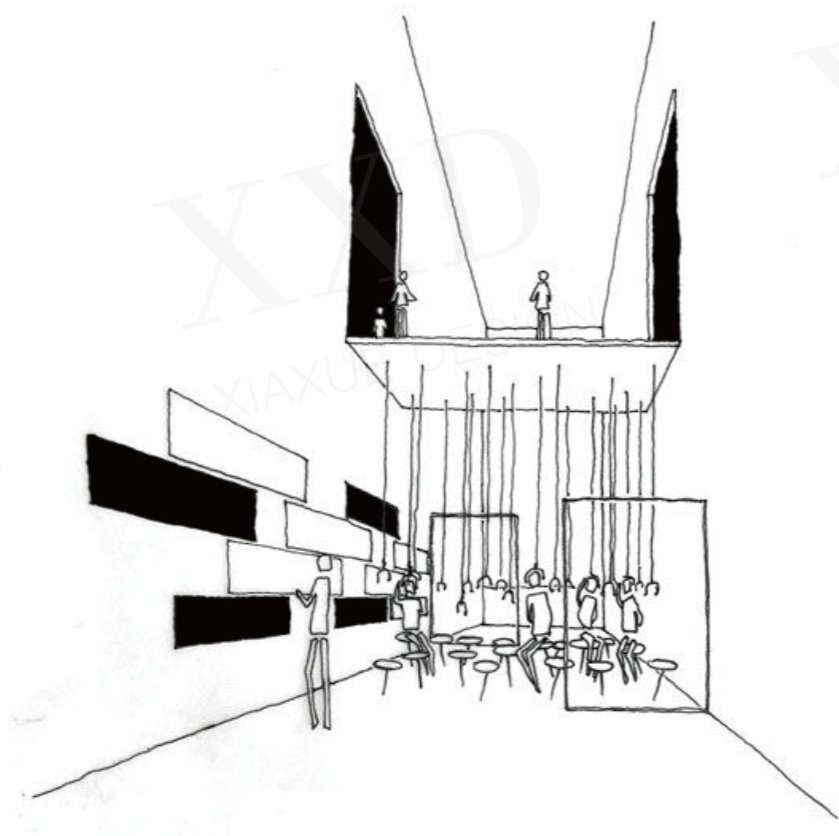
钢板饰面系统分类灵活、材质组合多样，既可以实现玻璃全通透的隔墙形式，又可以实现玻璃与板材混搭的风格，能满足多功能的办公需求。

STEEL VENEER SYSTEM

Makes the office space more functional and variable



The steel veneer system is available to different kinds of materials, it can build up a harmonious connection among the steel, glass and wooden panels, which makes the office space more functional and variable.



墙柜

Wall Cabinet



材料多选，功能多样
Alternative materials, various functions



WALL CABINET

IT HAS BEEN A FASHIONABLE DESIGN STYLE



到顶墙柜系统，使得整个空间整体划一、充分利用，同时充当墙体和存储使用，节省重复空间和成本的投入，有较高的性价比。

Wall cabinet system not only makes the whole space more harmonious and accordant, but also makes full use of the space. It has been a fashionable design style.



不同办公区间间隔使用、窗边使用
Be used as partitions between different office zone