



PDA——全球领先建筑材料供应商

其旗下各产品及品牌，主要关注节能、安全和人性的行业发展趋势

CONTACT US

www.china-medal.com



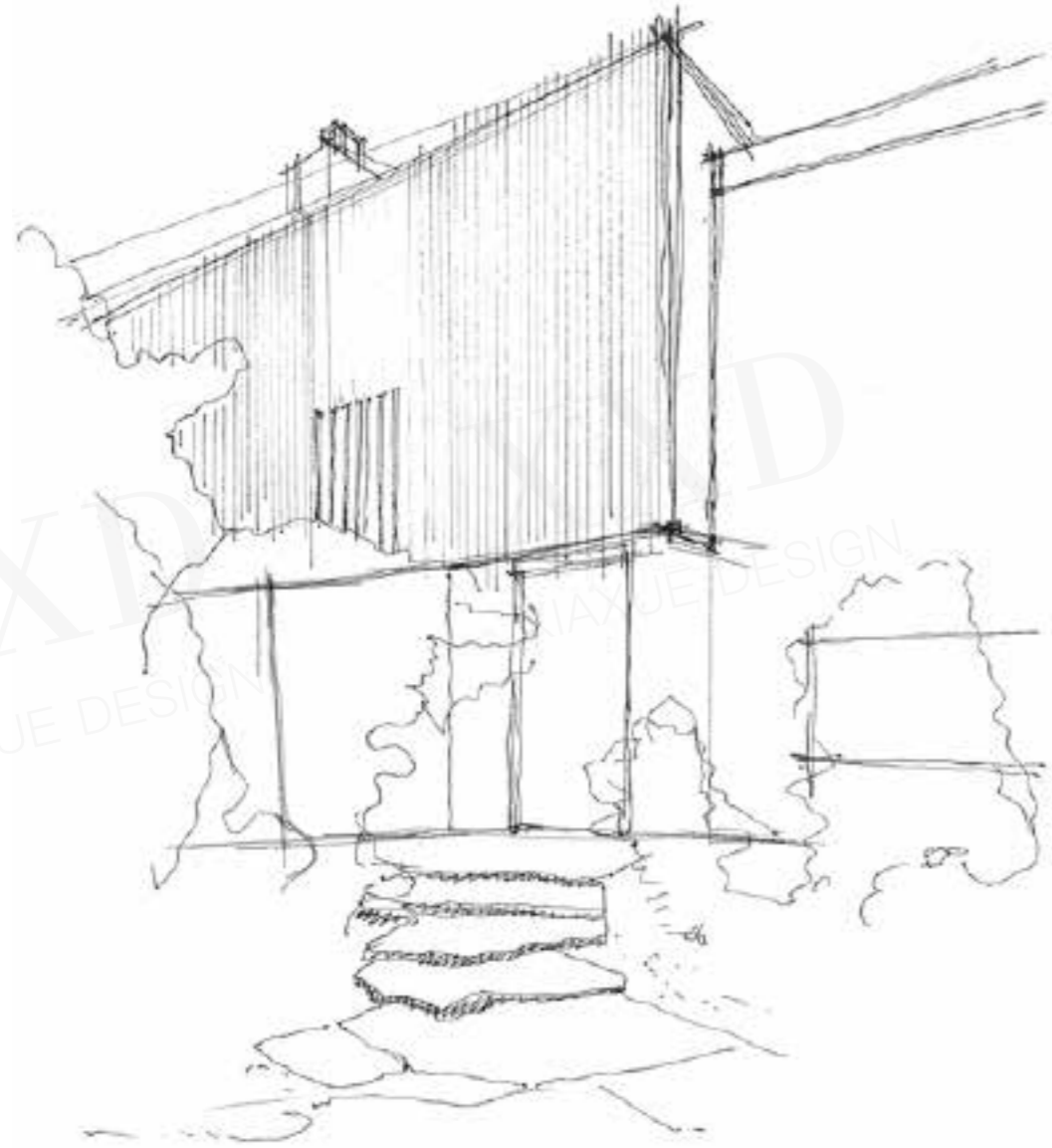
美得集团总部: +86 400 0365332

天津公司: +86 022 87310452
北京公司: +86 010 87723967
上海公司: +86 021 61526106
深圳公司: +86 0755 82555622

Tel -Tianjin: +86 022 87310452
Tel -Beijing: +86 010 87723967
Tel -Shanghai: +86 021 61526106
Tel -Shenzhen: +86 0755 82555622

ALL PRODUCTS AND BRANDS MAINLY FOCUS ON THE DEVELOPMENT OF ENERGY SAVING,SAFETY,AND HUMANE INDUSTRY.

目录



DIRECTORY

01

关于我们
About Us

02

加工工艺
Processing Technology

03

报告
Certificate

04

项目案例
Project Cases

关于我们

ABOUT US

美得集团成立于1995年，其系统产品在钢制幕墙、隔断、门、窗领域占据市场主导地位，也是世界集成防火系统最安全最权威的生产商、供应商和服务商。英国PDA公司，其专业主要是钢、铝型材模具的设计与研发，核心钢型材选于世界顶级的蒂森克虏伯原产钢带，经过定制专利模具，通过德国冷轧工业生产线形成精度、美观、强度超一流的钢型材艺术精品，使得美得集团成为国际领先的多元化产品制造与工程管理服务公司。

美得集团在中国天津设有2万平米的加工生产线，目前在防火幕墙、全玻防火门、防火隔断和防火窗领域已通过50余项专业国际报告和国内3C认证、型式报告等权威防火报告。Medal & PDA先后在北京、上海、深圳、广州、天津、武汉、沈阳等地设立分公司和在23个城市设有分支机构，业务覆盖六大领域：大型公共建筑、公共空间、医疗、学校、商业和高端民用门窗。

为全世界提供最安全的空间是我们一直秉承的企业愿景。目前我们的客户囊括了众多世界500强的知名企业，如联想、宝马、华为、迪士尼、宜家、亚投行、朱丽亚音乐学院、英皇集团、誉恒药业、华润集团、恒大、国家电网、深圳华为、中海油、美国奥的斯电梯公司、友邦保险等。我们将不忘初心，在新产业风口取得更大的革新，在现有基础上获得突破，创造奇迹！

Medal Group was founded in 1995. Its classical products, like steel curtain wall, partition, door and window has occupied the leading position in Chinese market. And it has been the most professional manufacturer, supplier and service provider of the fire-proof system. Through acquisition, the British PDA group has been a part of the Medal, it is famous for its advanced researching and designing teams. Based on the high-quality steel material from ThyssenKrupp, through the cold bending process, Medal has the ability to produce world class products, which will make Medal a more professional and competitive corporate.

Medal's semi-manufactured production lines are over 20 thousand square meters, with various of national and international certificates. Medal & PDA has established branches in Beijing, Shanghai, Shenzhen, Guangzhou, Tianjin, Wuhan, Shenyang and 23 agents in many other different cities in China. Our business scope contains public space buildings, hospitals, schools, business areas and high-quality residential doors and windows.

Providing a safe space for the society is always our pursuing purpose. Until now, we have served many customers from the top five hundred companies in the world, like LENOVO, BMW, HUAWEI, Disneyland, KEA, Asian Infrastructure Investment Bank, The Juilliard School, Emperor group, Gloria Pharmaceuticals, Huarun Group, Evergrande Real Estate Group, State Grid, Huawei Shenzhen Branch, CNOOC, OTIS, AIA, etc. We will stay true to our mission, keep down to earth, and strive for more creative wonders in the coming industrial revolution.



FOREIGN FACTORIES

PERFECT DESIGN ASPIRES INTERNATIONAL COMPANY
THE WORLD'S TOP BRANDS

国外工厂



作为行业高端品牌，PDA致力于为国际优质项目提供专业的钢制型材系统。

As the field top Brand,PDA focuses on providing professional systems for outstanding projects in the world.

PERFECT DESIGN ASPIRE



PDA(Perfect Design Aspire International)是有着悠久历史的型材生产商，总部坐落于英国伦敦。PDA在欧洲的建筑业和房地产业具有极强的创造力与领先地位，公司分别向客户提供咨询、研发、交流、实施四大服务内容。通过欧洲乃至全球子公司以及合作伙伴的研发人员与建筑师通力合作，规划并实现了未来建筑的工业化理念。

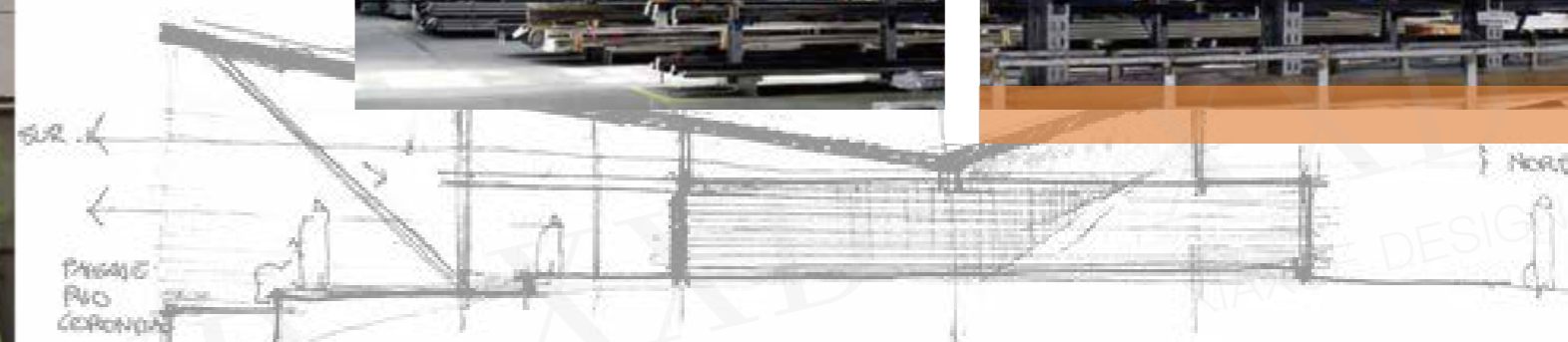
PDA(Perfect Design Aspires International),has a long history of profiles manufacturing,headquartered in London,UK.PDA has advanced creativity and a leading position in the construction field in Europe.The company provides consulting,respectively,research and communication to customers. Through the effort of the R&D department and architects,we successfully realized the industialization concept of future construction.

DOMESTIC FACTORIES 国内工厂



国内工厂，位于天津市静海经济开发区，占地20,000平方米，拥有国际最先进的生产设备和生产线，年产能200,000平方米。

The domestic factory, located in Jinghai Economic Development Zone in Tianjin city, owns the most advanced producing lines, and with an yearly production capacity of over 200 thousand square meters.



工厂采用全自动与半自动的机械化生产设备加工，型材所使用原材料均来自欧洲进口优质原材料，从而保证了加工产品的工艺和品质。

The factory is fully automated mechanized production equipment. Raw materials are imported from Europe, thus ensuring the process and quality of the products.

TIANJIN

HEADQUARTER

天津总公司

天津公司，成立于1997年，位于天津市河北区1946工业园区，拥有公司面积最大、产品最齐全的全新展厅。

Tianjin headquarter,since 1997,owns the most complete products exhibition hall.



SINCE 1997

SINCE



北京公司，成立于1999年，位于北京市朝阳区，和国内外诸多知名设计院和设计公司达成了战略合作关系，并且于2017年3月份参与修订了新版本的行业标准文件《建筑设计防火规范》。

Beijing branch,since 1999,has established good relationship with many famous architects and design companies and played an important role in revising the new version of the code of design on building fire protection and prevention.



BEIJING BRANCH

XXD
DESIGN

XIAXUE DESIGN

SHANG HAI BRANCH



上海公司，成立于2000年，位于上海市嘉定区，立足长三角，秉承“开放、包容”的精神，承接了迪士尼、宜家、雅培等诸多国际知名项目。

Shanghai branch, adhering to the spirit of openness and inclusiveness, has done many projects for many famous enterprises, like Disneyland, IKEA and so on.

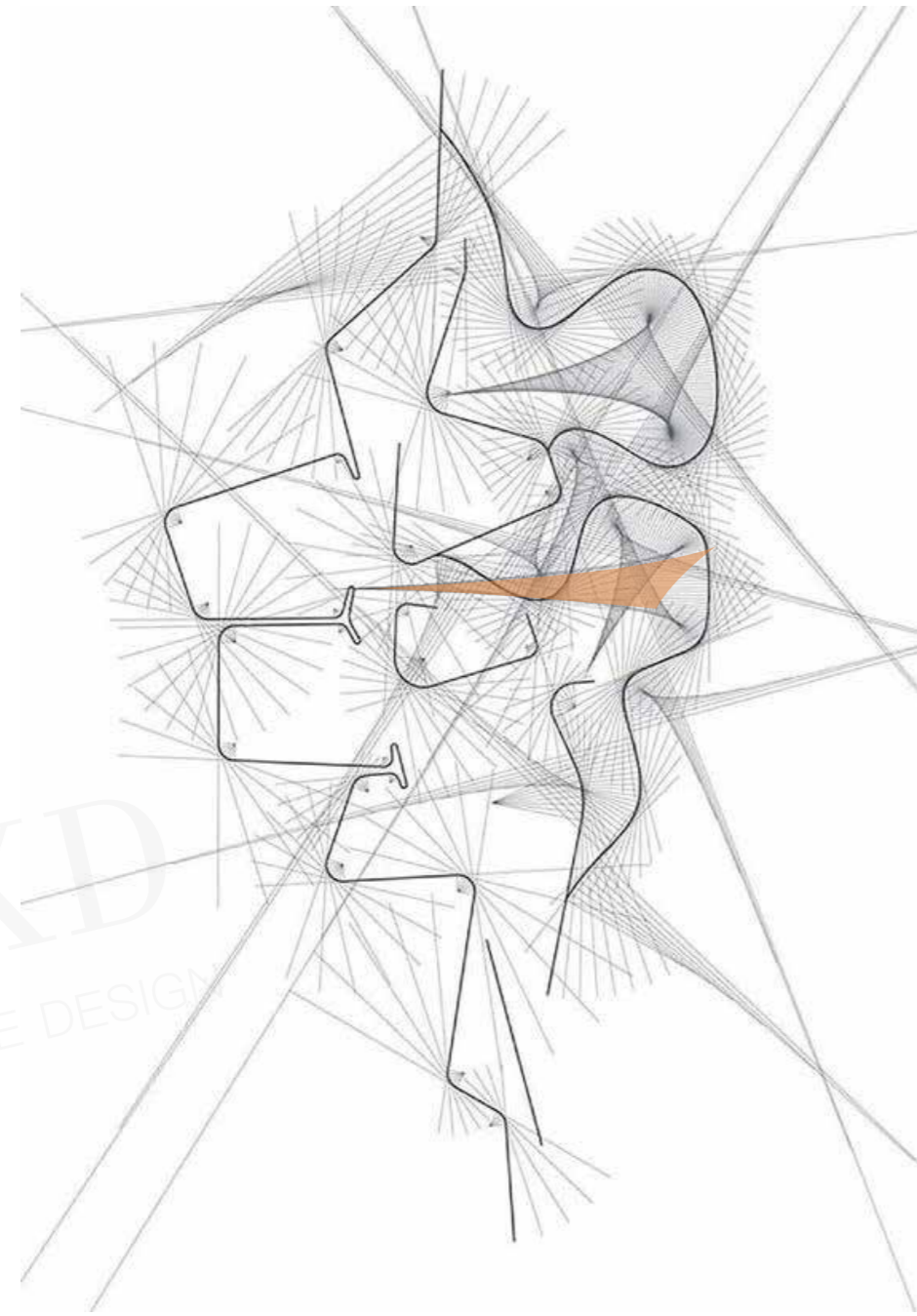


SHEN ZHEN BRANCH

深圳分公司

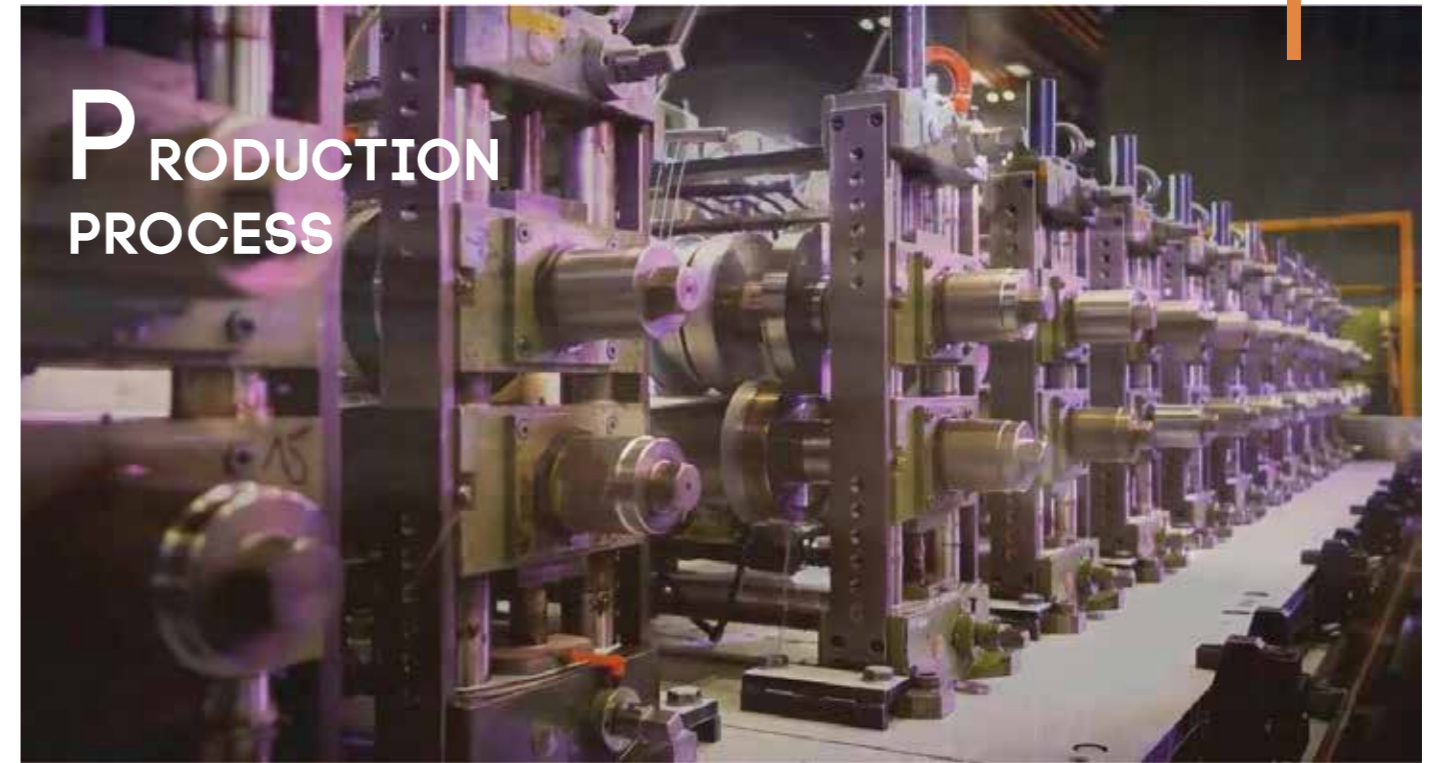
深圳分公司，是一家年轻的公司，成立于2015年，位于深圳和香港交界的福田区，为整个珠三角和港澳地区提供专业服务，同时立志打造成衔接国内外市场的桥头堡。

Shenzhen branch, a young company since 2015, offering products and service to the domestic and overseas markets.



加工工艺

PROCESSING TECHNOLOGY



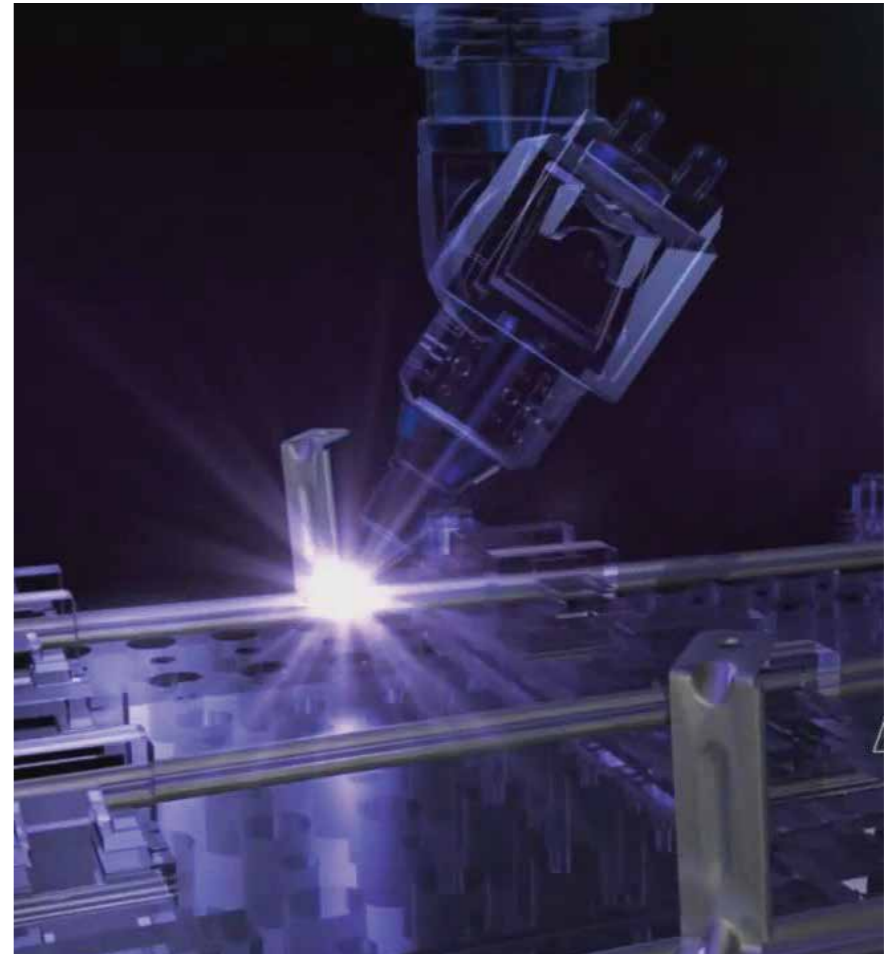
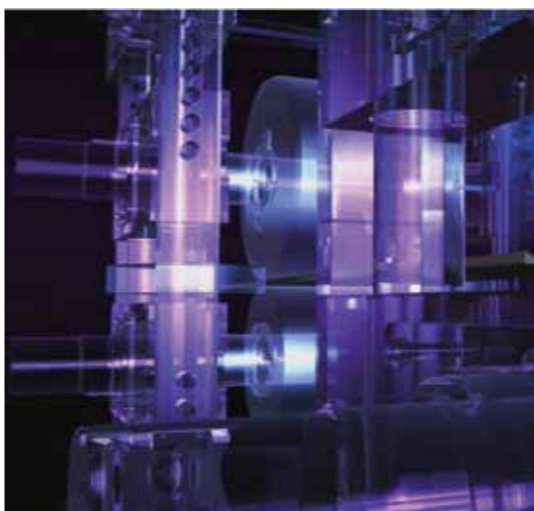
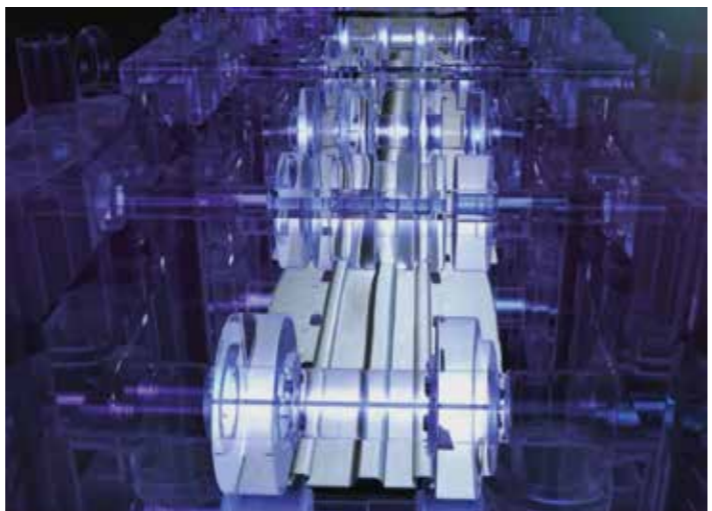
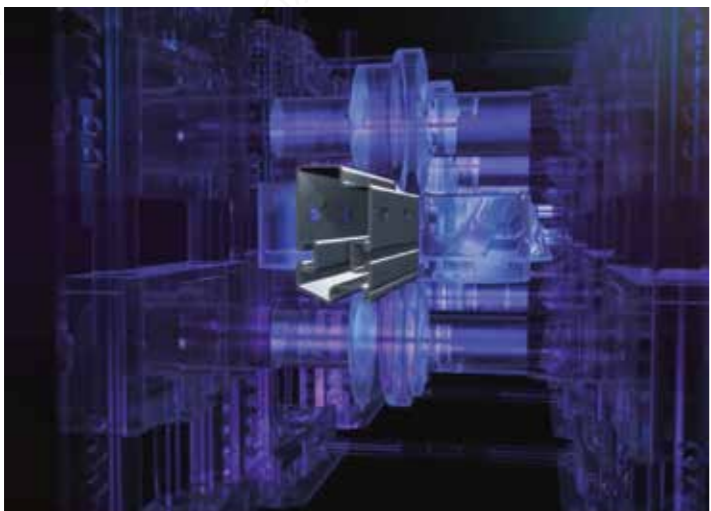
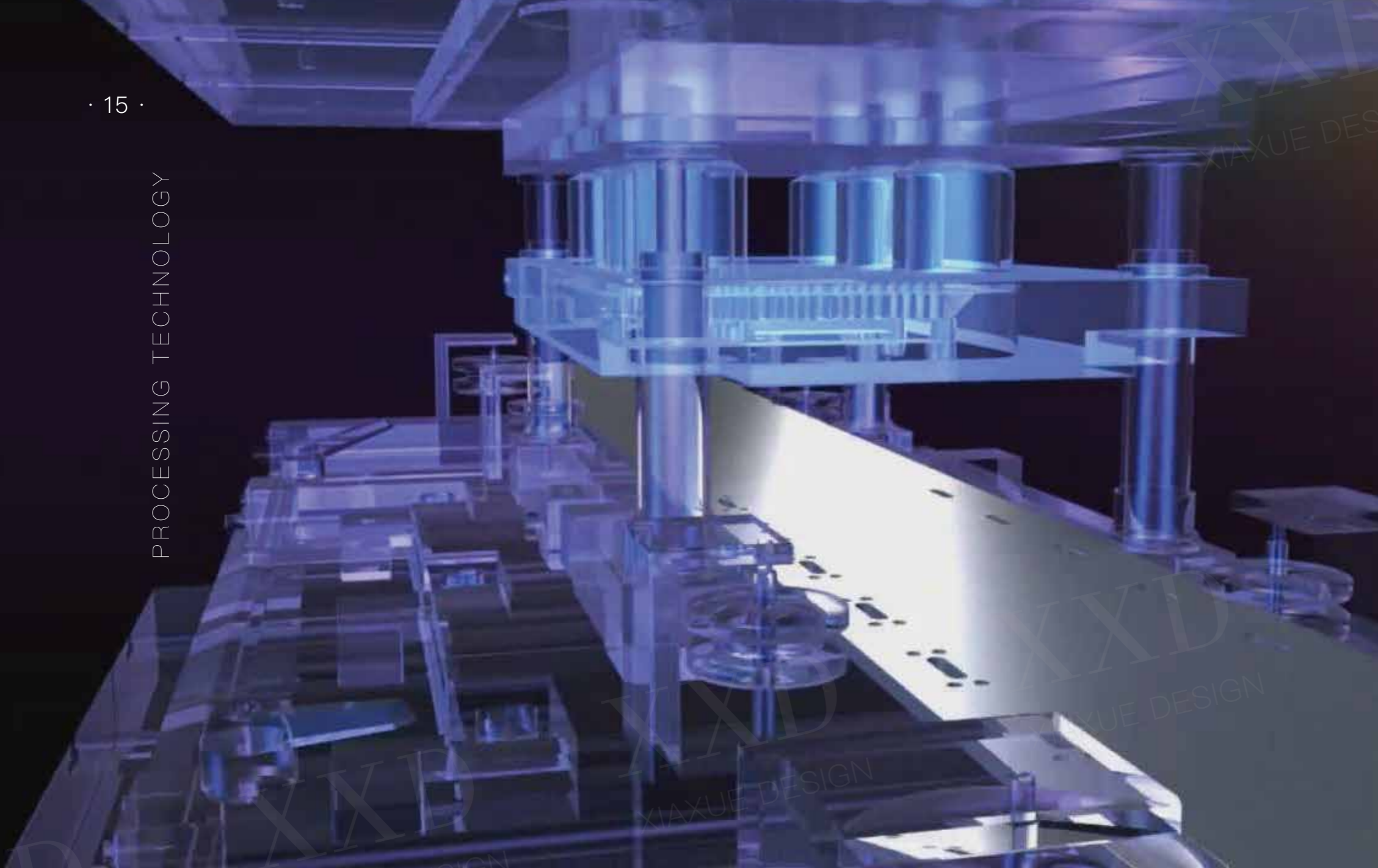
生产工艺

PDA高精度钢制型材以THYSSENKRUPP公司的钢材为原料，通过冷轧工艺，经过60道以上的工序滚压、焊接、打磨而成，生产过程中不会改变原钢带的物理特性（强度、耐火性等），同时不会产生任何污染。

防腐防锈处理：钢制型材表面使用锌镁合金镀层，具备高强度耐腐蚀性，同时更加的耐磨、耐划伤。

PRODUCTION PROCESS

PDA imported the steel materials from Thyssenkrupp in Germany, through cold bending, welding, polishing and about 60 more detailed process, steel profiles born. All the process will not destroy the physical properties including hardness and fire-resistance. Besides, it will develop no pollution. The Zinc magnesium alloy coating give our steel profiles a perfect performance in anticorrosion, antirust and scratch resistance.



加工工艺

PDA国内工厂拥有德国进口的“凯德宝”专业钢型材加工平台，该平台保证了型材加工的精度和速度；另外进口8台高平整度多孔焊接平台，其绝对的平整度是门窗焊接标准的度尺。德国进口“ROTEX”纺型铣床是专业用作各个非常规形状开孔的设备，可以满足客户更多适配五金的精度要求。

PROCESSING TECHNOLOGY

PDA owns the professional profile processing platform imported from Euro, which guarantee the process precision and speed. Besides, porous welding platform helps to achieve perfect evenness. Spun milling machine can be used to make various kinds of abnormal profiles, so that to achieve different requirements on hardware.

报告

Certificate

45N A类120min防火隔热报告

60N A类60min防火隔热报告



A类180min防火幕墙型式报告

50D C类188min防火隔热报告

tec50 C类70min防火型式报告



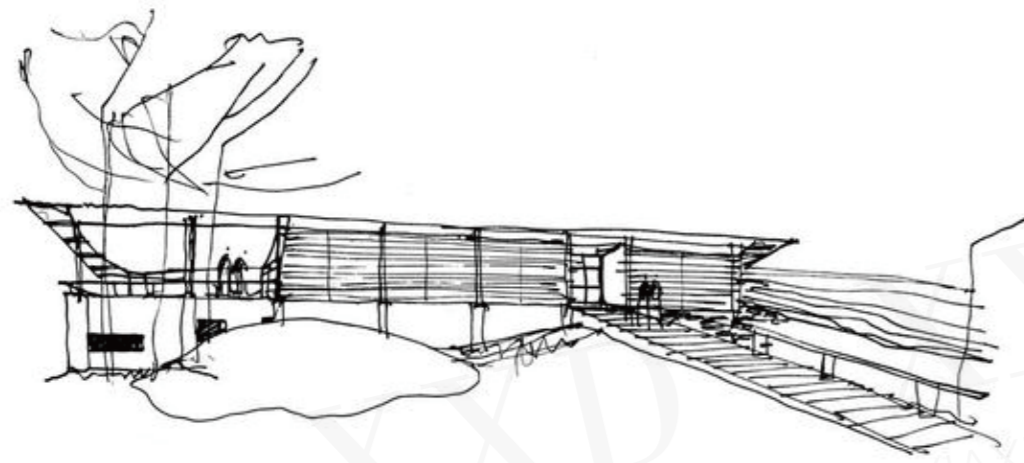
55N门 C类60min防火报告

80N C类111min防火型式报告



TEST CERTIFICATE

报告

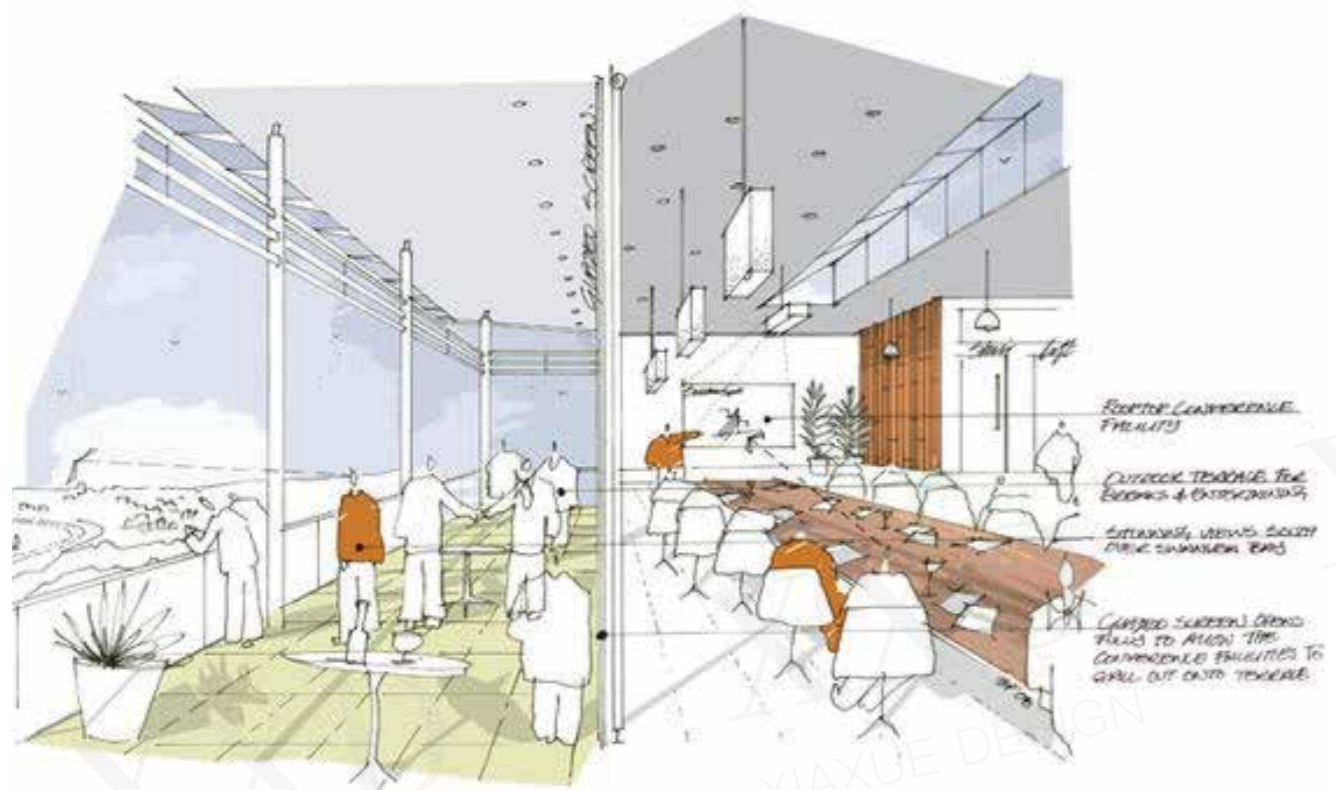


乙级防火门3C报告

A类乙级60min防火门报告



A类甲级90min防火门报告



国外案例

FOREIGN CASE

XIAXUE DESIGN

XIAXUE DESIGN

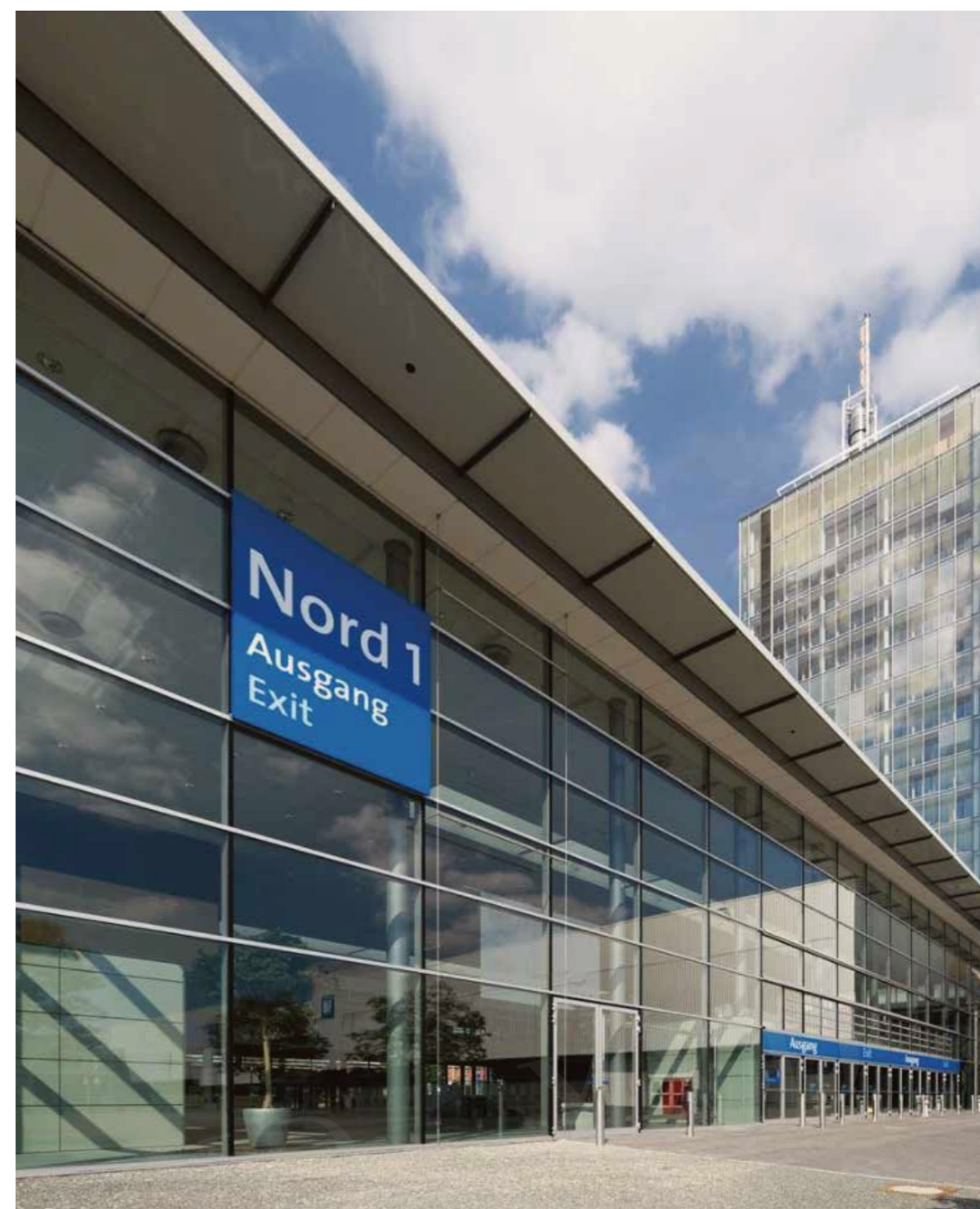
XIAXUE DESIGN

EXHIBITION CENTER, HANNOVER



德国汉诺威，汉诺威展览中心

GERMANY



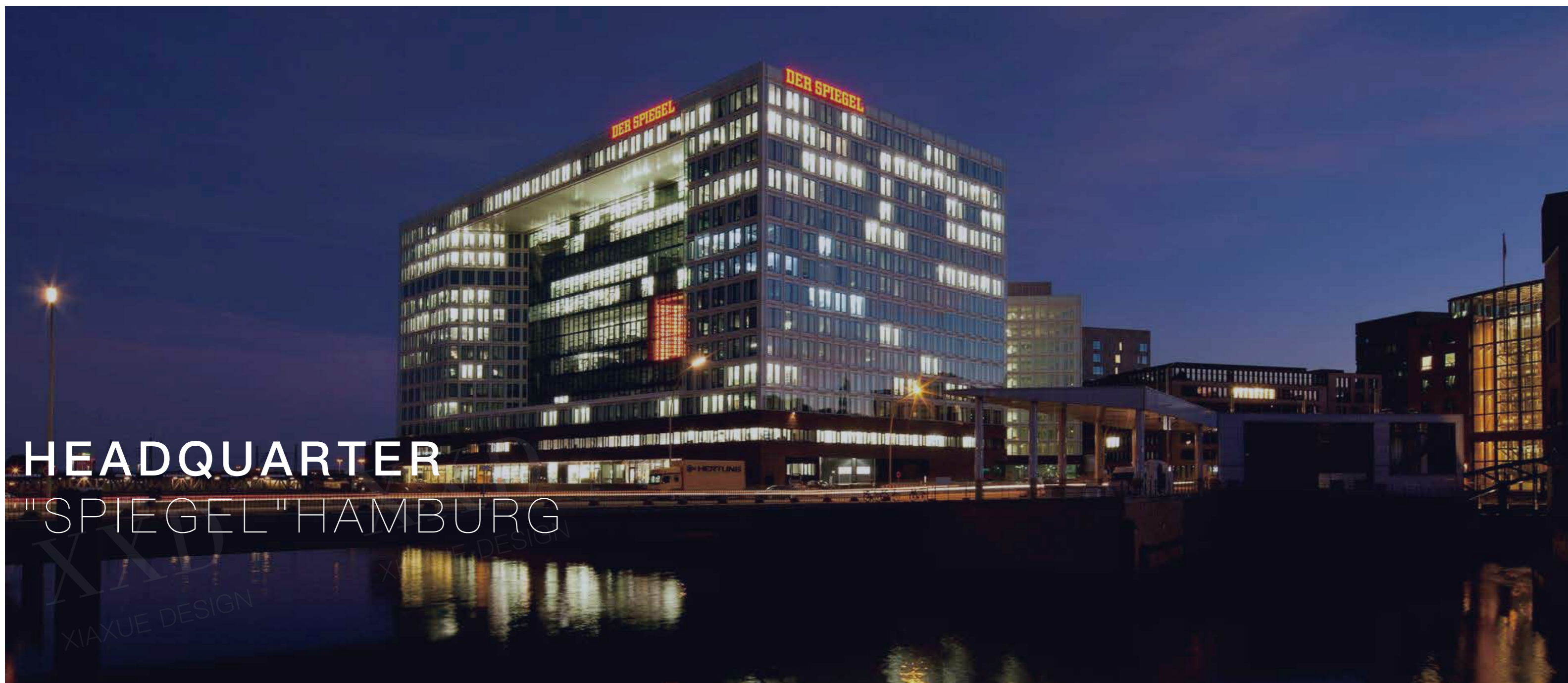
PDA-45N 钢质防火幕墙

PDA-45N STEEL FIREPROOF GLASS CURTAIN WALL

XXD
XIAOXUE DESIGN

XXD
XIAOXUE DESIGN

XXD
XIAOXUE DESIGN



HEADQUARTER "SPIEGEL" HAMBURG

德国汉堡，明镜周刊总部
Headquarter "Spiegel" Hamburg, Germany

PDA-60N 钢质防火幕墙

PDA-60N STEEL FIREPROOF CURTAIN WALL

XXD
XIAXUE DESIGN

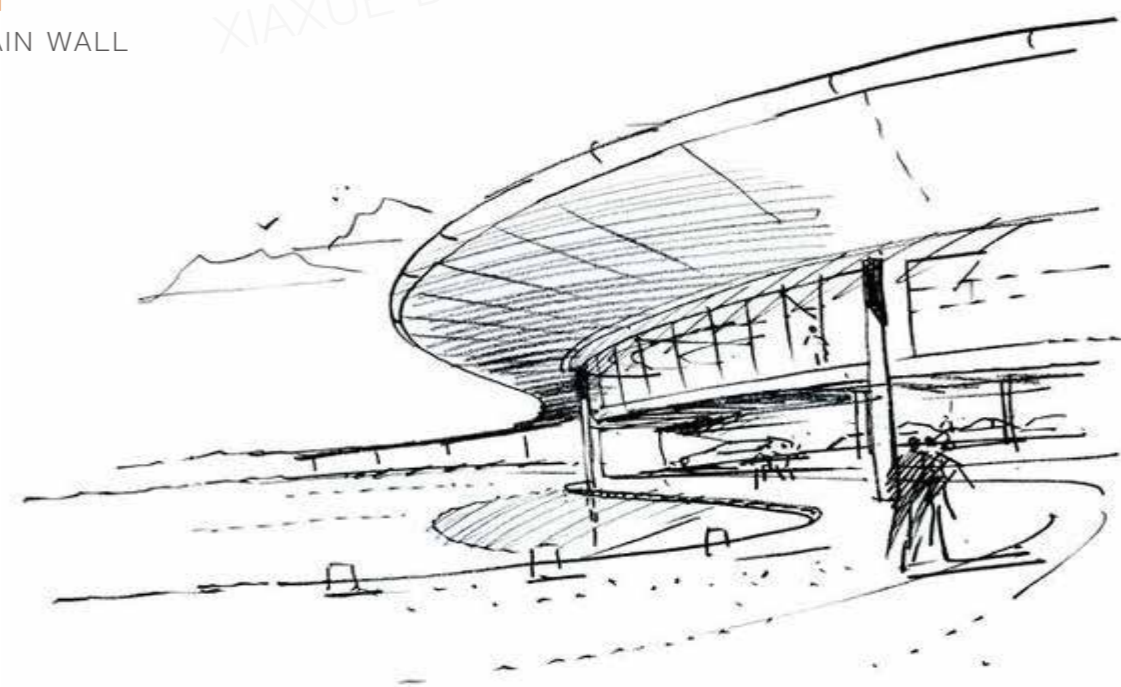
XXD
XIAXUE DESIGN

XXD
XIAXUE DESIGN



德国多特蒙德，O2 体育场

PDA -60TEC 叠加幕墙
PDA-60TEC MULTIPLE CURTAIN WALL



KAMEHA GRAND HOTEL, BONN, GERMANY

德国波恩，卡梅哈大酒店

PDA-60TEC 钢制隔热叠加幕墙

PDA-60TEC STEEL FIRE AND HEAT RESISTANT MULTIPLE CURTAIN WALL

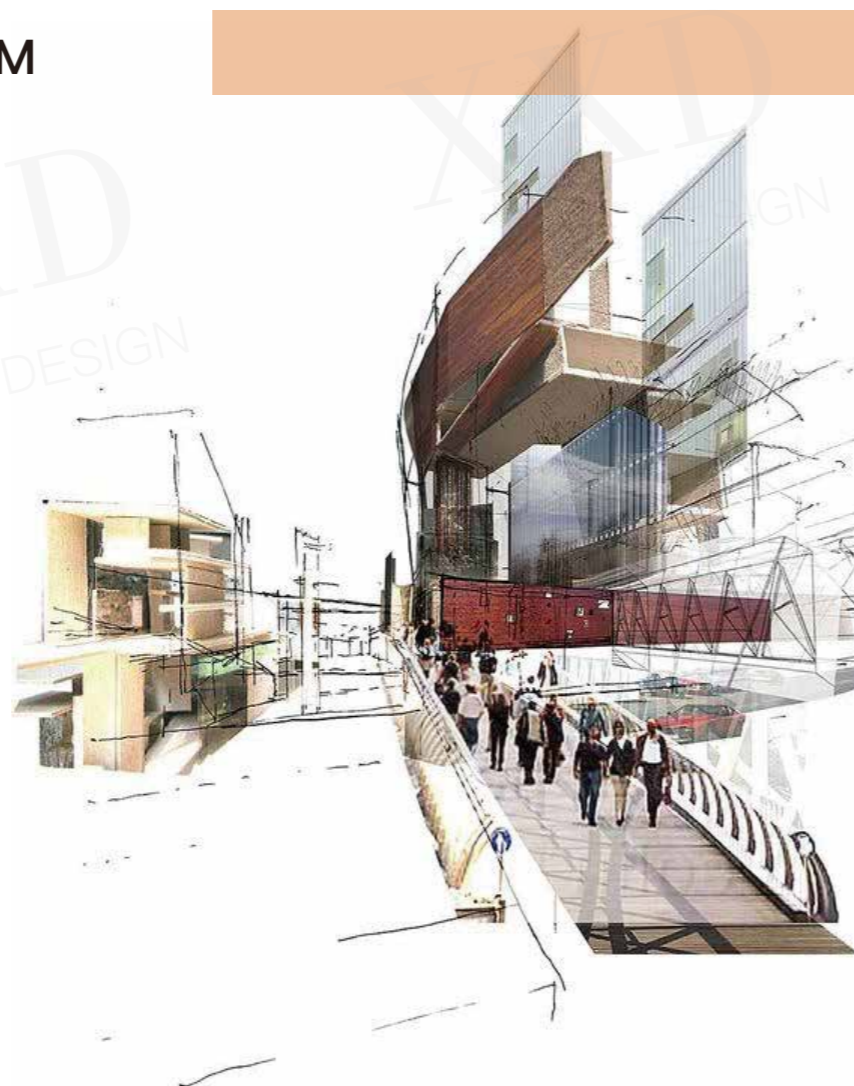




BRITISH GOBA-ZENTRUM
英国，戈巴中心

PDA-60TEC 叠加幕墙

PDA-60TEC MULTIPLE CURTAIN WALL



PDA-45N STEEL FIREPROOF GLASS CURTAIN WALL

GOBA
-ZENTRUM

SCHOOL, BREMEN, GERMANY

PDA-70FP 钢制隔热窗

PDA-70FP STEEL FIRE AND HEAT RESISTANT WINDOW



德国不莱梅，市立小学

PDA-70FP 钢制防火门

PDA-70FP STEEL FIRE AND HEAT RESISTANT DOOR



德国慕尼黑， 慕尼黑市立图书馆

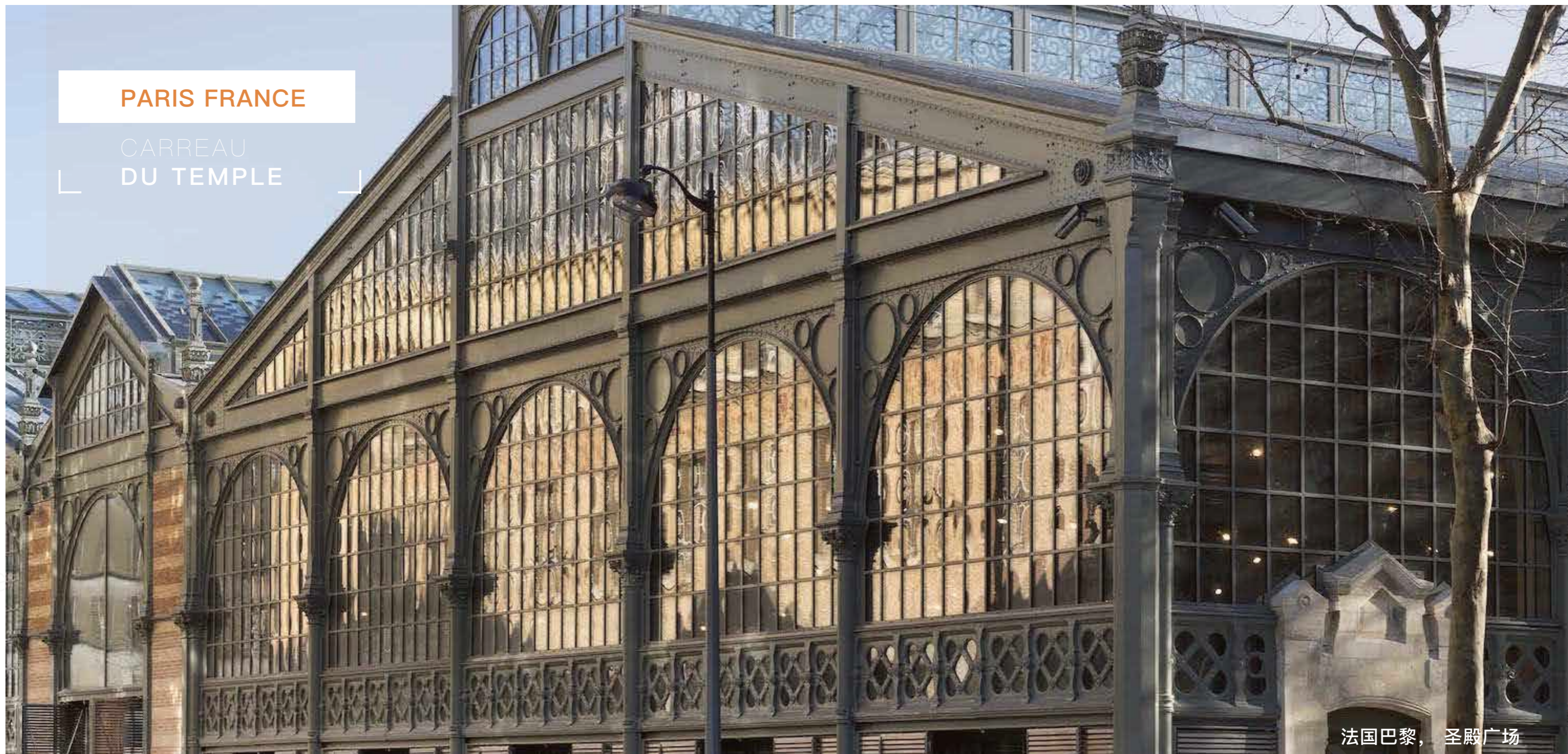
LIBRUARY MUNICH,GERMANY



PDA-70FP 钢质断热防火窗

PDA-70FP FIRE AND HEAT RESISTANT GLASS WINDOWS





PARIS FRANCE

CARREAU
DU TEMPLE

法国巴黎， 圣殿广场

PDA-FINELINE 纤细钢制窗和幕墙
PDA-FINELINE WINDOWS AND PARTITION

XXD
XIAXUE DESIGN

XXD
XIAXUE DESIGN

XXD
XIAXUE DESIGN

XXD
XIAXUE DESIGN

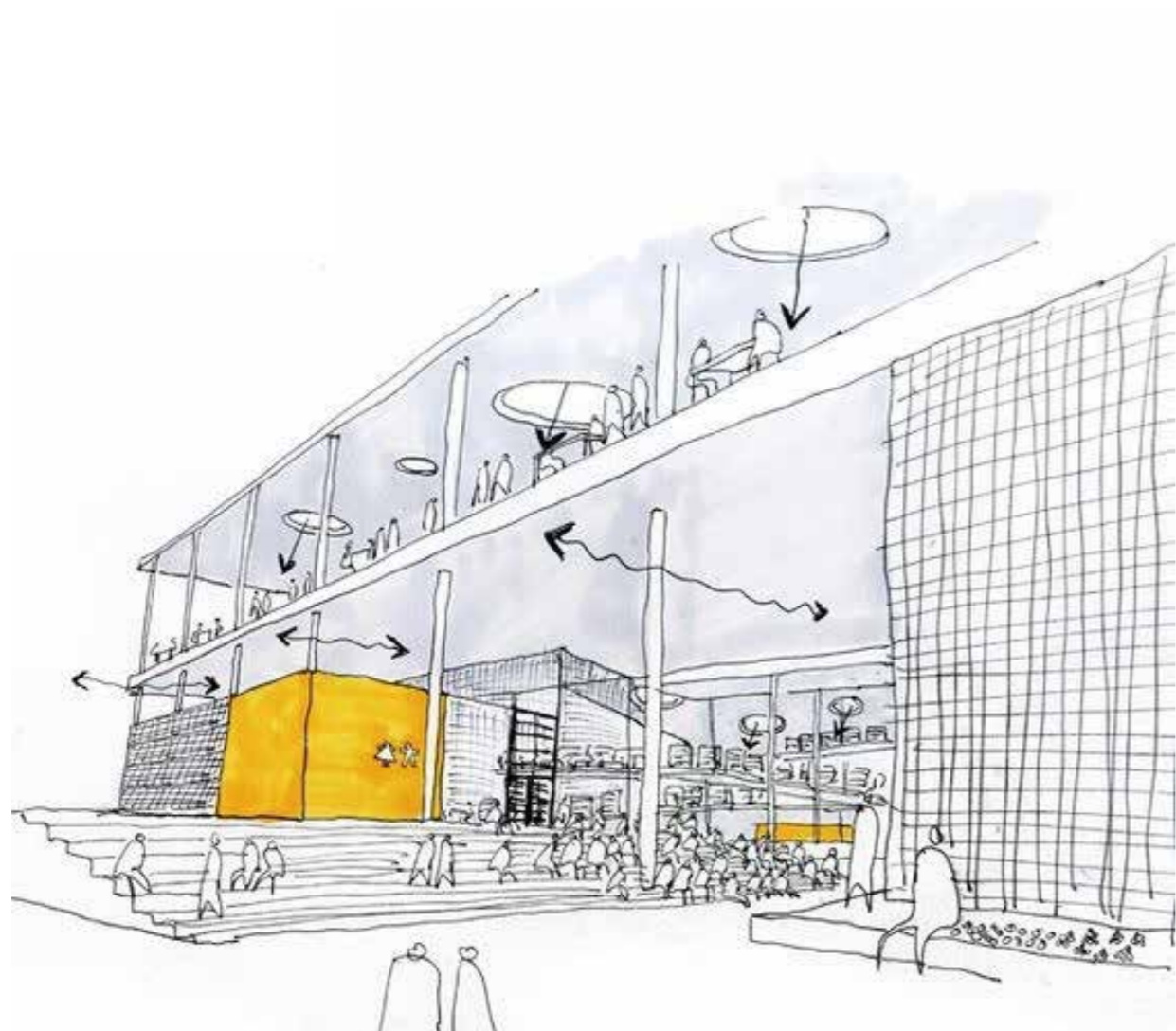


法国巴黎 枫丹白露镇

PDA-FINELINE 纤细钢制窗
PDA-FINELINE WINDOWS AND PARTITION



PARIS, **FRANCE**
CHÂTEAU DE
FONTAINEBLEAU



DOMESTIC CASE

国内案例

XXD
XIAXUE DESIGN

XXD
XIAXUE DESIGN

XXD
XIAXUE DESIGN

XXD
XIAXUE DESIGN

XXD
XIAXUE DESIGN

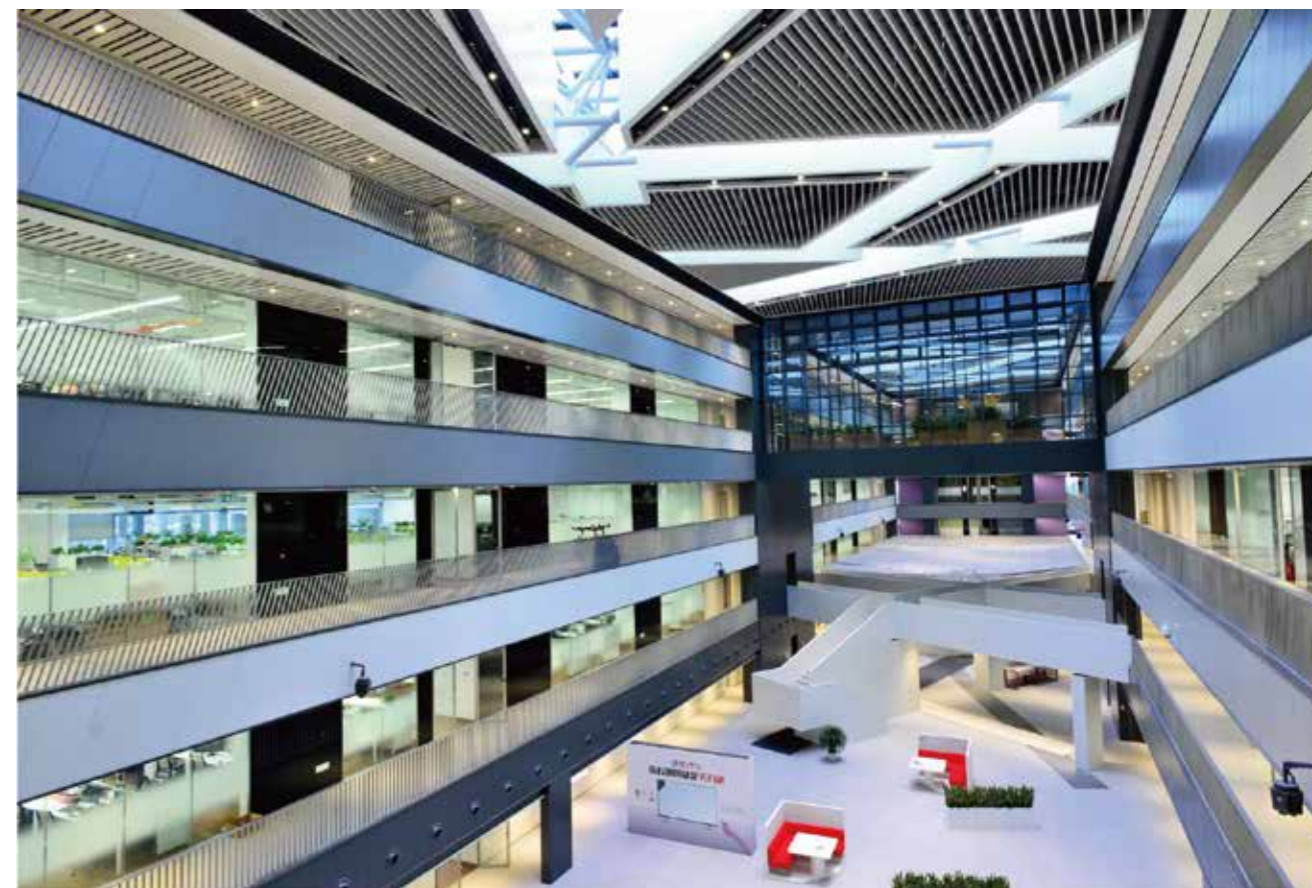


客户名称: 宝马中国
Customer Name: BMW

建筑面积: 14万平米
Floor area: 140 thousand square meters

宝马, 作为世界著名的轿车公司, 其业务覆盖了BMW品牌汽车的生产、销售和售后服务。PDA承建了宝马中国50全钢防火系列玻璃隔断墙项目。

BMW, as a famous auto mobile company, covers the production, selling and after-sale service of all its brand cars. PDA constructed the fireproof glass partitions of its project in China.



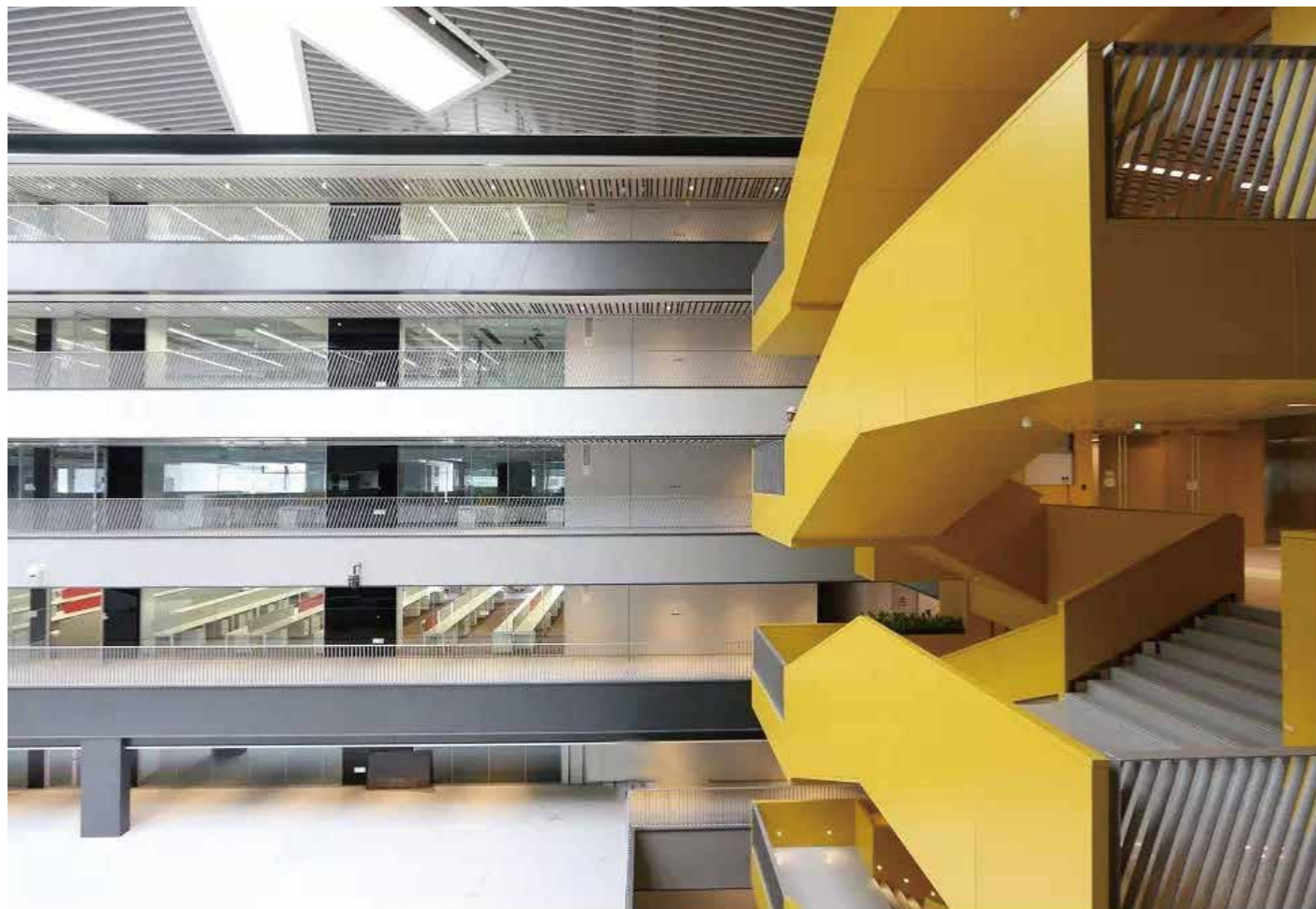
lenovo

客户名称: 联想集团
Customer Name: Lenovo Group

建筑面积: 18.8万平米
Floor area: 160 thousand square meters

联想总部(北京)园区一期占地面积约6.6万㎡,总建筑面积18.8万㎡,其中地上建筑面积11.3万㎡,地下建筑面积7.5万㎡。

Lenovo headquarter (Beijing),an area of about 66 thousand square meters,total construction area is about 188 thousand square meters:ground floor ares 113 thousand square meters,underground construction area 75 thousand square meters.



联想一期的隔断面积为7000m²，包括玻璃隔墙、门边设备带、玻璃门、防火系列玻璃隔断等。

PDA constructed the glass partition, glass door, fire door, fire glass partitions. With an area of about 7,000 square meters.

XXD
XIAOXUE DESIGN



结构形式为框架剪力墙结构及部分钢结构，包括地上三层、地下两层，建筑高度为28m。

The structure for the frame shear wall structure and steel structure, contains 3-6 layers and 2 layers under the ground. The height of the ground building is about 28m.

XXD
XIAOXUE DESIGN



联想二期的隔断面积为8000㎡，包括A类1小时中庭防火玻璃幕墙、C类1小时疏散走道防火玻璃隔断、电梯厅前室两侧A类2小时防火玻璃隔断+乙级全玻防火门等。

PDA constructed the partitions and fireproof glass doors in different parts of the project, the number of these products is about 8,000 square meters.

钢制型材搭配防火玻璃，整个建筑空间实现了光与影的和谐，达到了安全性、实用性和美观性的平衡。

Both Steel profiles and fireproof glass, find a balance between light and shadow, practical and beautiful.



**GLASS ATRIUM
PARTITIONS
DOORS**





客户名称: 迈科中西部商品交易中心
Customer Name: Midwest Commodity Exchange Center

建筑面积: 16万平米
Floor area: 160 thousand square meters



迈科中西部交易中心: 丝绸之路的一颗明珠, 坐落在古都西安, 美得集团成功参与了办公区域的隔断工程, 涉及产品水影和冰晶, 面积达13000多平米。

Midwest Commodity Exchange Center: a historical city on the Silk Belt Road in Xi'an city. Medal successfully built up the interior partition of this huge project, the related products includes Water and Crystal Transparent partitions, with an area of more than 13,000 square meters.



AGRICULTURAL BANK
OF CHINA
GLASS PARTITION

RANKS EIGHTH POSITION IN THE TOP 1000 WORLD BANKS



客户名称：中国农业银行
Customer Name: Agricultural Bank Of CHINA



建筑面积：16万平米
Floor area: 160 thousand square meters

中国农业银行是中国四大银行之一，最初成立于1951年，是新中国成立的第一家国有商业银行，也是中国金融体系的重要组成部分，总行设在北京。在“世界银行1000强”排名第8位。2010年完成“A+H”两地上市，总市值排名位列全球上市银行第5名。美得集团承接农业银行宇天系列双层板式隔断与玻璃隔断项目。

Agriculture Bank of China is one of the largest banks in China. It was founded in 1951. It is the first state-owned commercial bank established in China and has been an important part of China's financial system. Its head office is located in Beijing and ranks eighth position in the top 1000 world banks. Its total market value ranked fifth in the world's listed banks. PDA constructed the double deck slab partition and glass partition.



百度，2000年1月创立于北京中关村，是全球最大的中文搜索引擎，最大的中文网站，现成为中国最受欢迎、影响力最大的中文网站。美得集团承接百度大厦博瑞克单层防火玻璃隔断墙项目。

Baidu, founded in January 2000 in Zhongguancun, Beijing has been the largest Chinese search engine in the world, and the largest Chinese website. Now, it has become the most popular and influential Chinese website in China. PDA undertook the project of borak glass partition wall of baidu building.

建筑面积：14万平米 客户名称：百度大厦



BAIDU BUILDING



Floor area: 140 thousand square meter

founded in January 2000 in Zhongguancun
BEIJING

The largest Chinese search engine in the world,
and the largest Chinese website



W A N D A P L A Z A



客户名称：万达广场
Customer Name: WanDa Plaza

建筑面积：14万平米
Floor area: 140 thousand square meters

北京万达广场位于朝阳区国贸中心东长安街北侧，占地面积10公顷，由北京万达广场房地产开发有限公司开发。与国贸大厦、惠普大厦、京广中心等形成一个现代商务区。

经严格力学专业测试，型材设计薄厚有序，壁厚达1.8-2.5mm，其强度远远高于市场其他同类产品；符合国家铝合金型材的高精度标准。

Beijing Wanda Plaza is located on the north side of East Chang'an Street, Chaoyang District International Trade Center. It covers an area of 10 hectares and was developed by Beijing Wanda Plaza Real Estate Development Co., Ltd. It forms a modern business district with Guomao Tower, Hewlett-Packard Building and Jingguang Center.

Tested by strict mechanics, the profile design is thick and orderly, and the wall thickness is 1.8-2.5mm. Its strength is much higher than other similar products in the market; it meets the high-precision standard of national aluminum alloy profiles.



60 THOUSAND
SQUARE METERS

ABBOTT

DESIGN 50 STEEL PARTITIONS
AND CRYSTAL TRANSPARENT PARTITIONS.



客户名称: 雅培
Customer Name: Abbott

建筑面积: 6万平米
Floor area: 60 thousand square meters



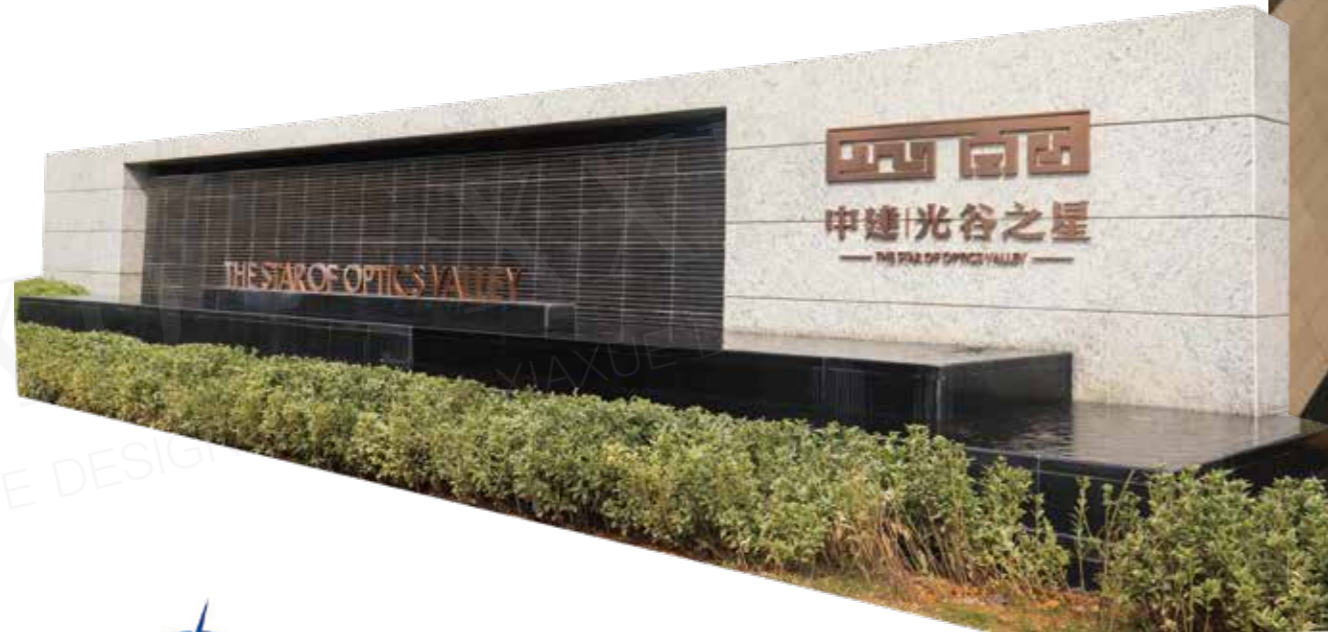
上海雅培制药有限公司（雅培Abbott Laboratories）公司于1888年在美国芝加哥由雅培医生创办，公司历经百年发展，如今的雅培公司已发展成今天一个医药及营养产品多元化的世界500强企业。美得集团有幸在2009年承接了雅培中国上海公司的办公隔断项目，涉及产品有50钢制隔断和冰晶款式等装饰性隔断。

Abbott, established in 1888 in Chicago in America by Doctor Abbott, has experienced more than 100 years and now has been a well-known medical and nutrition enterprise in the world. PDA was honored to build up the partition of its office zone in Shanghai branch, the related products includes Design 50 steel partitions and Crystal transparent partitions.

THE STAR OPTICS VALLEY



45N A类1小时防火玻璃幕墙



客户名称: 武汉东湖高新技术开发区
 Customer Name: Wuhan East Lake high tech Industrial Development Zone
 建筑面积: 73万平米
 Floor area: 730 thousand square meters

武汉东湖高新技术产业开发区，别称“中国光谷”，位于武汉市东南部的三湖六山之间，半城山色，半城湖光助力光谷成为长江上的一颗明珠。武汉·中国光谷，总建筑面积73万平方米，其中地上63万平方米，地下10万平方米。经过专家论证，目前国内中庭大空间采用最纤细的A类玻璃幕墙系统。

Wuhan East Lake high tech Industrial Development Zone is called the optics valley of China, located among the mountains and lakes in the southeast of Wuhan, the city decorated by mountains and lakes has been actually a pearl on the Yangtze River. The optics valley of China is about 730 thousand square meters. The Class A fireproof glass has been the most popular material to build the atrium glass curtain wall in China.

OTIS

IS THE BIGGEST SUPPLIER AND SERVANT
IN THE ELEVATOR FIELD IN THE WORLD

OTIS

客户名称: 美国奥的斯电梯公司
Customer Name: OTIS

隔断面积: 500平米
Partition area: 500 square meters

美国奥的斯电梯公司: 是全球最大的电梯、扶梯及人行走道的供应商和服务商。目前, 有160万部奥的斯产品在全球200多个国家和地区运转着, 每三天就能运载全球人口一次。在奥的斯上海分部项目中, PDA有幸参与了室内办公隔断的建设, 涉及的是冰晶系列产品。

OTIS, is the biggest supplier and servant in the elevator field in the world. Till now, 1.6 million elevators and escalators are working in more than 200 countries in the world, namely they carry the whole population of the world once three days. In the project of OTIS Shanghai branch, PDA built the interior partition with Crystal system.



客户名称：友邦保险
Customer Name: AIA

隔断面积：500平米
Partition area: 500 square meters

友邦保险：全称美国友邦保险有限公司（AIA），美国国际集团（AIG）的全资附属公司，1919年在上海创立。1931年，业务拓展至中国香港。2017年全球百强最具价值的品牌之一。

American International Assurance Co, Wholly-owned subsidiaries of the America International Group. Established in Shanghai in 1919, and spread its business to Hongkong in 1931. It has become one of the 100 international worthiest brands in 2017.



AIA

GLOBAL TOP
VALUABLE BRANDS



BAOSTEEL



客户名称: 上海宝钢研究院 隔断面积: 1500平方米
 Customer Name: BAOSTEEL Partition area: 1500 square meters

ADVANCED TECHNOLOGY
SERVICE **ABILITY**
ENVIRONMENTAL
SHARING

BAOSTEEL

上海宝钢研究院：是全球领先的现代化钢铁联合企业，坚持走“创新、协调、绿色、开放、共享”的发展之路，拥有享誉全球的品牌、世界一流的技术水平和服务能力。

BAOSTEEL, a top steel united enterprise in the world, stick to the idea of Creation, coordination, environmental and sharing, possesses the global famous brands, advanced technology and service ability.

CHINA PHARMACEUTICAL UNIVERSITY



客户名称：中国药科大学
Customer Name: China Pharmaceutical University

隔断面积：800平米
Partition area: 800 square meters

中国药科大学：位列中国内地大学第42位，其中，药学类位列第一。在2018年最新一期的ESI中，中国药科大学的药理学与毒理学，这次占据了全球第72位！

China Pharmaceutical University, ranks the 42nd of the universities in the mainland of China, especially the pharmacy ranks the 1st. In the 2018 ESI, the pharmacology and the toxicology ranks the 72nd in the world.

XXD
DESIGN

XXD
XIAOXUE DESIGN

XXD
XIAOXUE DESIGN

XXD
XIAOXUE DESIGN



NANJING 2014
Summer Youth Olympic Games

客户名称: 南京青奥中心
Customer Name: Nanjing International Youth Cultural Centre

隔断面积: 1200平米
Partition area: 1200 square meters

南京青奥中心: 南京国际青年文化中心, 是青奥轴线以及滨江风光带上重要的景观节点和标志性建筑物, 也是南京城市新中心标志性建筑之一, 是一座集酒店、写字楼、大型停车场、购物广场、会议展览、酒店式公寓等功能于一体的时尚新潮酒店综合体项目。

Nanjing International Youth Cultural Centre, located on the sides of the Bin River and has been a symbol and classical building of this city. It is a synthesis building which concludes the hotel, office building, parking lot, shopping center, exhibition center, apartment and so on.

